

Chill-Out, designed by Gordon Guillaumier, 2013





Chill-Out, designed by Gordon Guillaumier, 2013

Chill-Out

A system of sofas, armchairs, poufs and coffee tables, inspired by the themes of freedom, simplicity and lightness, Chill-Out are ideal for domestic or collective spaces, on their own or in a linear or corner composition. Featuring slim yet comfortable and cosy volumes, the upholstered pieces are accompanied by coffee tables in Carrara or basaltina marble, with an elegant matt finish: a historic material that adds both value and charm to this refined, contemporary design.

Gordon Guillaumier

Gordon Guillaumier was born in 1966, and was educated firstly in Malta, then in Switzerland, England and Italy. He graduated from IED in Milan (1988-91), before specializing in design at the Domus Academy, Milan (1992). In 1993 he began working with Baleri Associati, as well as collaborating with architect Rodolfo Dordoni. In 2002 he set up his own design studio in Milan, principally working on product design, but also for design consultancy projects. In 2006 he lectured in industrial design at Milan's Politecnico university.

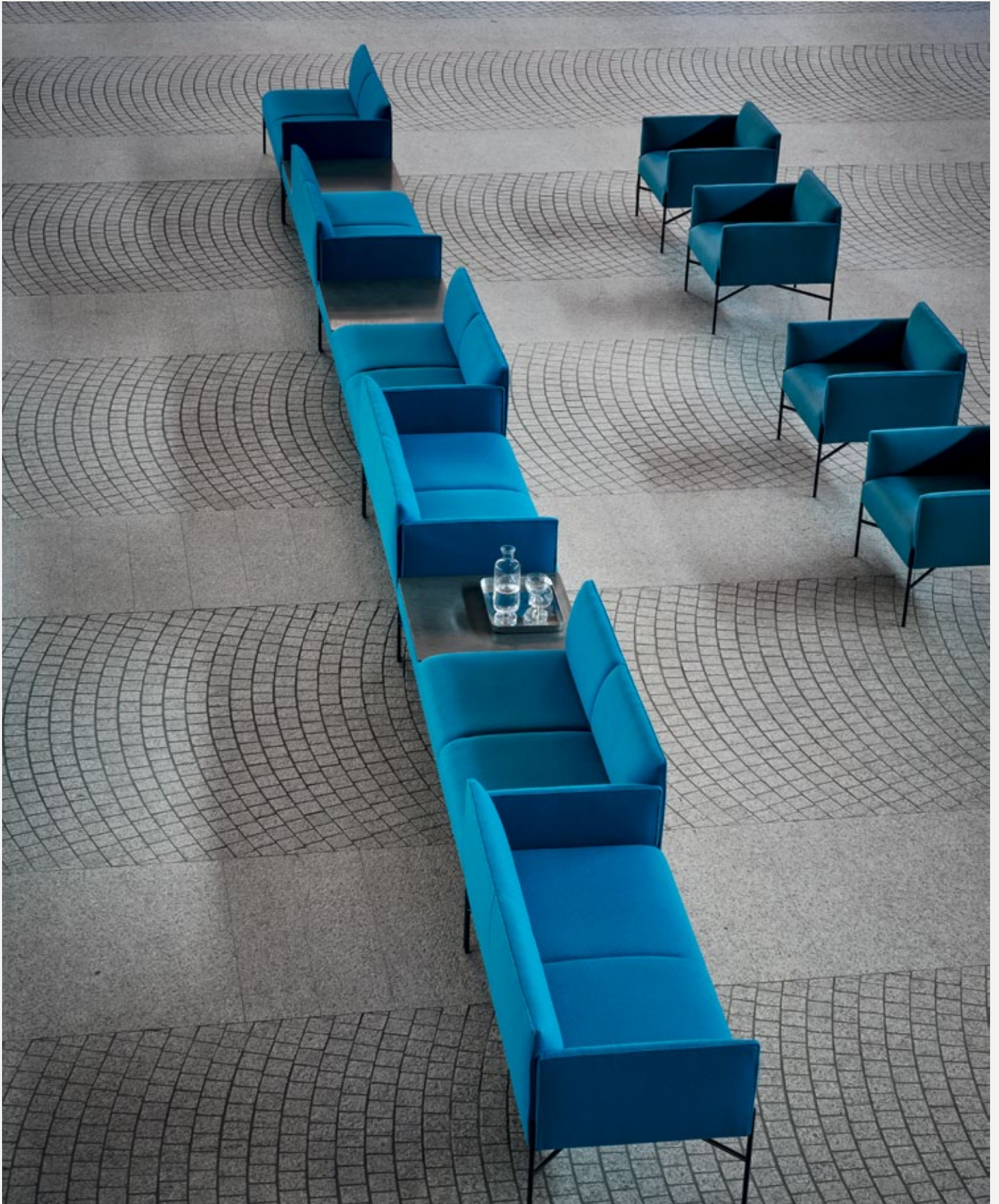


Gordon Guillaumier





**Chill-Out, designed
by Gordon Guillaumier, 2013**

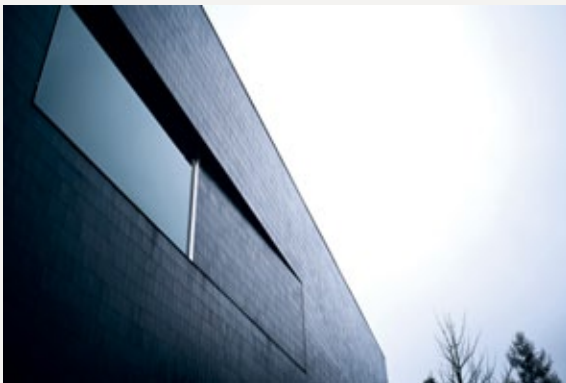




Chill-Out, designed by Gordon Guillaumier, 2013

Sustainability

All Tacchini products are manufactured in the verdant area of Brianza between Milan and Como, with its strong tradition of Italian manufacture and craft. All the materials and semi-finished products come from a zone of about 50 km around the Tacchini plant and this, as well as allowing direct control of their quality, also enables the pollution and energy consumption deriving from their transport to be reduced to a minimum.

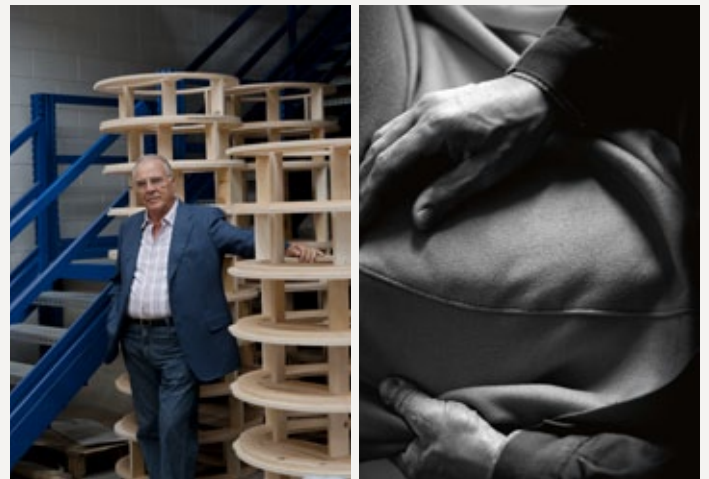


A special feature which makes Tacchini an even more special name, also as regards the eco-sustainability of the furniture.

Tacchini and the Environment

Giving space to ideas and quality to space: a central philosophy that Tacchini expresses not only through its products, but also throughout every aspect of the company. It's an approach embodied in the new headquarters, designed by Roberto Grossi, that lie in the countryside between Como and Milan.

Established in 1965 by Antonio Tacchini, in one of the richest moments for design and Italian industry development, the company stood out for high quality and its indissoluble relation with contemporary design right away.



Tacchini is nowadays a reference point in furniture business, thanks to its constant stylistic and functional research, project and product culture, care for people and environment. From 2012 Tacchini implemented a certified quality and environmental system according to the law UNI EN ISO 14001:2004. Tacchini's Quality Management System guarantees rigorous testing in every process' step, staff involvement at all levels, satisfaction and transparency with suppliers and customers. Tacchini's products are created in compliance with most recent and widespread International standards, in a safe and healthy work environment, using Italian or European materials and patented technologies.



Chill-Out, designed by Gordon Guillaumier, 2013

Wood

Wood is a renewable raw material. All products derived from wood, such as for example plywood, have the advantage of being able to be machined more easily than wood and do not deform. The timber we use – solid or plywood – comes mainly from European and Russian forests and is seasoned to specific values of humidity with tests. Most of the structures of the products in the collection have a frame in solid pine or ash, or in beech or poplar plywood.

Polyurethane

Flexible expanded polyurethane is a solid elastic polymeric material with open cell structure. It is a non-toxic material and above all free from ozone-damaging components. Production and processing of the polyurethane we use meet the objectives of the new policy of ensuring the protection of human health and of the environment. We focus in particular on the choice and use of the types of density of polyurethane suitable for preserving over the years the features of load capacity, elasticity and resilience. For products used in public spaces flame-retardant expanded polyurethane is chosen, tested and certified according to international regulations.

Foam

Similar to polyurethane, foam is used for moulding products with special and organic shapes. It is a material which is highly resistant to ageing and flames. Its appearance at the edges is clean, compact. All products made with a foam structure offer a solution with extraordinary comfort.

Down

All our cushion products contain down washed and sterilised according to directives from the Italian health ministry. We only use carefully selected goose and duck down that complies with national and international industry regulations and is subjected to strict tests throughout the production process. The down is also anti-static and anti-allergy, absorbs moisture and insulates, and is also considered naturally flame retardant.

Metal

The need to combine complex yet lightweight shapes with resistant materials necessarily involves the use of metals such as steel and aluminium. Products in polyurethane foam are made with an inner steel frame for adding strength to the structure. The bases are in tubular metal which can be chromed with a gloss or satin finish or painted with epoxy powders.

Elastic belts

The elastic belt used on the seats of our upholstered products is a component to be chosen with care in order to ensure adequate elasticity and springing for the dimension and the structure of the product. We use plaited elastic webbing to add greater comfort and resistance to weight stresses.

Joints

All products in the collection with reclining mechanisms are controlled by mechanical joints, designed to withstand heavy loads. The lamellar structure with double internal mechanism in special carbon steel allows outstanding resistance to loads and wear.

Marble

Marble is a natural material obtained through a metamorphic process from sedimentary rock such as limestone or dolomite, causing crystallisation of the calcium carbonate. The specific features of the material can be seen in the marble we use which is worked by artisans with machinery and polished with natural waxes which go to respect the actual essence of the nature of the marble.

Laminate

The laminates used for producing our table tops are high-pressure laminates whose outstanding features of durability and resistance to every kind of strain are guaranteed at European level. In greater detail, full-colour laminate is a material coloured at the surface and throughout the thickness with predefined colours and is made up of sheets of paper impregnated with thermosetting resin and subjected to the combined action of heat and high pressure.

Polypropylene

Polypropylene has high features of resistance to chemical agents, can be welded and is normally used with temperatures between +5°C and + 90°C. PP has low mechanical resistance to traction, bending, compression, abrasion.

Glass

Among the types of plate glass (or simply crystal) we use, the one used on the small black tables is the linea azzurra by Glaverbel, suitable for all processes for the building, decoration, automobile and hi-tech sectors. It requires a float manufacturing process, which means that the faces of the glass are perfectly flat and parallel. The other line, used instead on the small white tables, is the extra-clear Diamant glass from Saint Gobain, an ideal medium for enamelling and capable of ensuring an impeccable result. The neutral colour of the edge also makes it particularly prized in the furniture industry.

Fabric and faux leather

The sample range of fabrics at Tacchini, a company which works mainly in the contract sector, consists of high-quality articles with very high technical performances able to meet the most demanding industrial standards. New and researched materials which range from natural types such as cotton, linen, wool and velvet to a vast assortment of technical materials such as luxury and innovative eco-leather with wide and diversified colour ranges and high-quality fabrics for outdoor use. This is in addition to a vast collection of leather of different types and categories in a wide range of colours.

Leather

The leather we use is the result of years of experience and research and is produced and processed entirely in Italy. We pay particular attention to selecting the best skins from Italian (European) livestock in order to guarantee you the excellent quality of the upholstery which makes your product unique and exclusive. The natural beauty of the leather is highlighted by those inimitable irregularities which are a guarantee of a genuine product.

Aniline leather

The aniline leather that we offer among the range of leathers in our collection is full grain, aniline dyed and smooth. It is characterised by its silky, round and full-bodied hand. The delicate and enveloping feel is maintained over the years. The quality of this product comes mainly from the selection of the best European raw hides and is then enhanced by tanning and processing performed entirely in Italy.



Chill-Out, designed by Gordon Guillaumier, 2013

Recycling, packaging, reuse of products

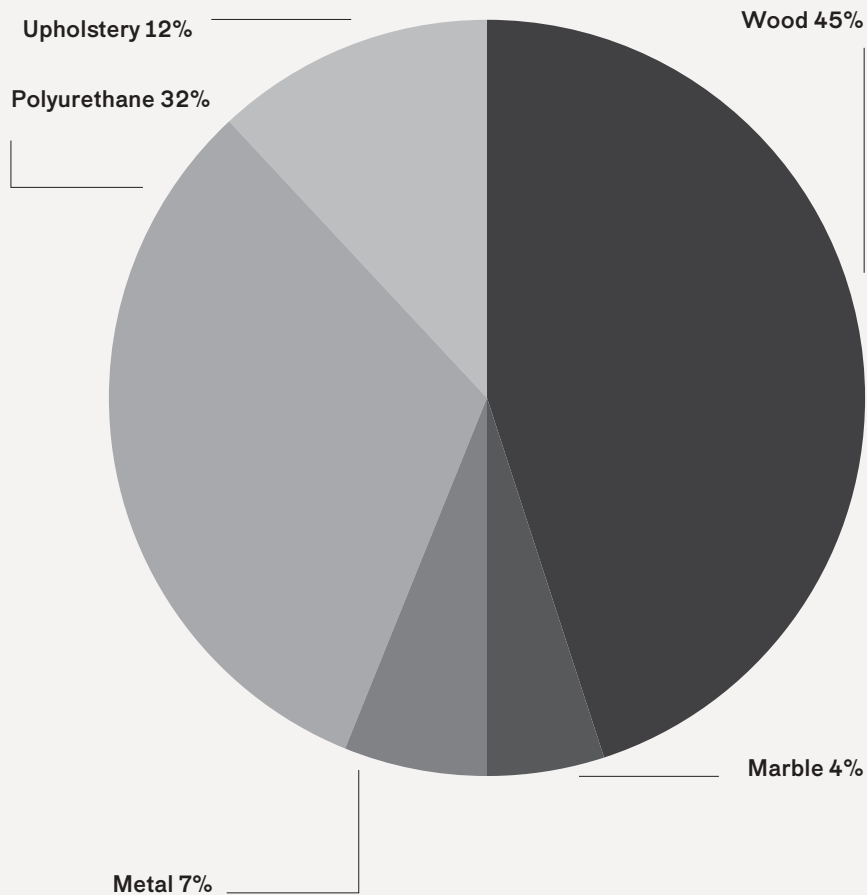
Once a product reaches the end of its life cycle it has to be eliminated.

Recyclability

All Chill-Out elements are 100% recyclable when fully separated. Tacchini undertakes on-going research and development, with efforts made to introduce products which are a perfect combination of function and safety without jeopardizing the final design of the same articles. During production attempts are made to minimize noise and emission levels and to reduce rejects as far as possible. All the single materials which make up the production process, once disassembled, can be reused several times, maintaining a high quality standard.

Packaging

Chill-Out elements are dispatched already assembled. It is protected by tissue paper and cellophane to protect the covering from dust and direct contact with the cardboard. The product is packed in rigid cardboard boxes suitable for world export. Manufacture of the packaging observes the criteria for recovery both as recycling and energy recovery and composting.





Chill-Out, designed by Gordon Guillaumier, 2013

Measurements

CHILL-OUT	by Gordon Guillaumier		Modular System (Sofa, Armchair, Table)		2013
OCHILA212 W 214 D 69 H 44 cm	OCHILB212 W 214 D 69 H 44 cm	OCHILC212 W 214 D 69 H 44 cm	OCHILD212 W 214 D 69 H 71 cm H seat 44 cm	OCHILE212 W 214 D 69 H 71 cm H seat 44 cm	OCHILF212 W 214 D 69 H 71 cm H seat 44 cm
OCHILG141 W 144 D 69 H 44 cm	OCHILH141 W 144 D 69 H 44 cm	OCHILI70 W 74 D 69 H 44 cm	OCHILL141 W 144 D 69 H 71 cm H seat 44 cm	OCHILM141 W 144 D 69 H 71 cm H seat 44 cm	OCHILN141 W 144 D 69 H 71 cm H seat 44 cm
OCHILO141 W 144 D 69 H 71 cm H seat 44 cm	OCHILP70 W 74 D 69 H 71 cm H seat 44 cm	OCHILQ70 W 74 D 69 H 71 cm H seat 44 cm	OCHILR70 W 74 D 69 H 71 cm H seat 44 cm		

Materials and Finishes

INTERNAL FRAME	PADDING	BASE	UPHOLSTERY
Poplar plywood 18 mm thick.	Differentiated - density polyurethane foam.	Tubular metal base diam. 16 mm, available matt chromed or power-coated painted in different colors:	Non removable cover.
		T02 White RAL 9016	
		T03 Grey RAL 7016	
		T24 Matt Chromed	

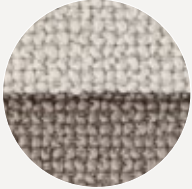


Chill-Out, designed by Gordon Guillaumier, 2013

Suggested Upholsteries

Cat. B

Bakul



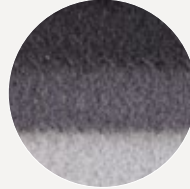
Cat. D

Daylily



Cat. Special

Early



Cat. Lusso

Liko



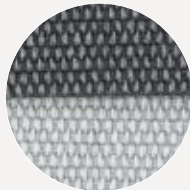
Cat. D

Daffodil



Cat. Extra

Emblic



Cat. Top

Thesium



Cat. Super Leather

Divina



Cat. Extra

Euphorbia



Cat. Top

Thymus



Tacchini Product Files:
Chill-Out, designed by Gordon Guillaumier

 **Tacchini**

Tacchini Italia Forniture Srl
19, v. Domodossola, 20822 Baruccana di Seveso (MB), Italy
T. +39 0362 50 41 82 F. +39 0362 55 24 02
E-mail: info@tacchini.it — www.tacchini.it

© Tacchini Italia Forniture Srl