

# Amoebe

Verner Panton, 1970



**Amoebe**

**Amoebe Highback**

Amoebe was created by Verner Panton in 1970 for his famous Visiona installation, which included several versions of this lounge piece. It embodies the exuberant spirit of the early 1970s. Thanks to its upholstered surfaces and the flexible back shell, Amoebe offers a high level of comfort.

Both chair versions are available in a variety of brightly coloured fabric covers.

**Materials**

- **Backrest:** laminated frame.
- **Upholstery:** foam.

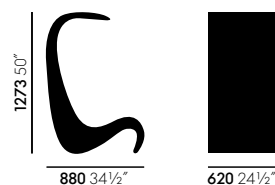
The Amoebe Highback version of the chair has a flexible backrest that curves over the head of the sitter, forming a sculptural canopy. This striking accent gives the chair a sense of shelter and seclusion.

---

**DIMENSIONS** (in accordance with EN 1335-1)



**Amoebe**

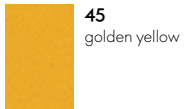


**Amoebe Highback**

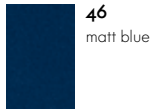
---

## Surfaces and colours

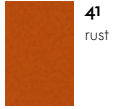
**vitra.**



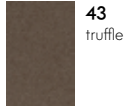
**45**  
golden yellow



**46**  
matt blue



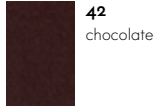
**41**  
rust



**43**  
truffle



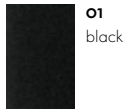
**03**  
red



**42**  
chocolate



**21**  
green



**01**  
black

## Tonus

---

