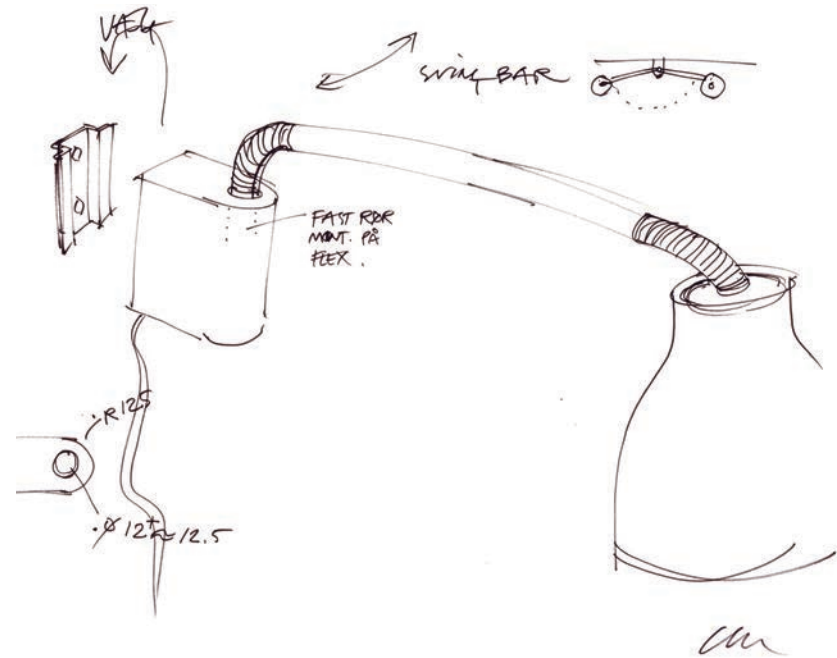


Caravaggio Wall

DESIGNED BY CECILIE MANZ

LIGHT
YEARS



Based on the well-known Caravaggio shape, Cecilie Manz has created a wall lamp that is precise, refined and, above all, functional. The classic shade (ø140 mm) is installed on a flexible tube, which makes it possible to tilt the shade and thereby direct the light. The wall bracket means the lamp can be rotated 180 degrees, which – together with the flex tube – makes the lamp very flexible. Caravaggio Wall is supplied with two fittings; one fitting is for direct installation on a power outlet and a slimmer version for installation with visible wiring. The lamp has three narrow slits at the top of the shade that allow light to pass through in the same way as the other Caravaggio models. The switch is positioned discreetly at the bottom of the wall bracket to ensure easy access.

Caravaggio Wall is suitable for a vast array of lighting tasks, e.g. in the living room, the reading corner, the corridor, or as bedroom lighting. Caravaggio Wall gives a direct, soft, and targeted light, while elegantly shielding the light source. Available in black and white respectively.

FACTS

COLOURS/SURFACE

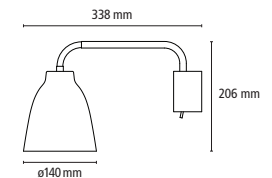
Black or white, semi matt lacquer.

MATERIAL

Drawn steel and die-cast zinc alloy.

LIGHT SOURCE

E27 max 46W.



CARAVAGGIO WALL

MODEL	PRODUCT	DESCRIPTION	LIGHT SOURCE
CARAVAGGIO Wall White	23041405	Semi matt white lacquer	E27 max 46W
CARAVAGGIO Wall Black	23041308	Semi matt black lacquer	E27 max 46W