

---

# Connection

---

*Massimo Castagna*  
2013



Tavolino in cristallo extralight temperato 12 mm. Struttura in ottone brunito a mano. L'ottone risulta naturalmente macchiato e disomogeneo. Questa lavorazione artigianale conferisce ad ogni pezzo una particolare unicità, rendendolo esclusivo.

Coffee table with 12 mm extralight tempered glass. Structure in hand burnished brass. The hand burnished brass finish looks naturally spotted and irregular. Due to this craftmade processing, each product is unique and exclusive.

Dimensioni / Sizes

Cm

Ø 100 x 30h

Ø 130 x 30h

100 x 100 x 30h

130 x 130 x 30h

140 x 70 x 30h

180 x 76 x 30h

Ø 50 x 45h

Ø 70 x 38h 989

Double 107 x 70 x 45h

Inches

Ø 39½" x 12"h

Ø 51¼" x 12"h

39½" x 39½" x 12"h

51¼" x 51¼" x 12"h

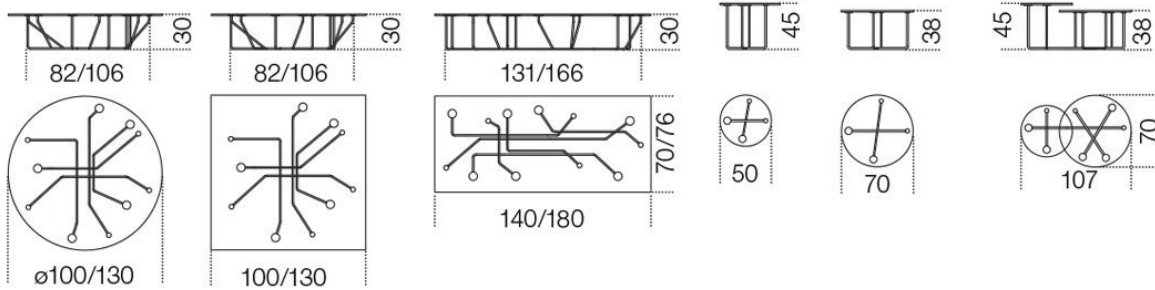
55¼" x 27¾" x 12"h

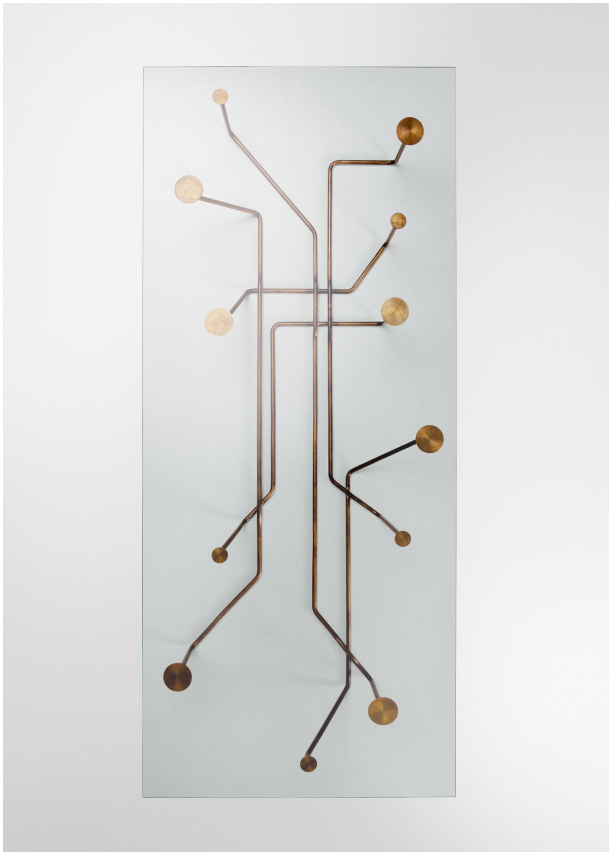
71" x 30" x 12"h

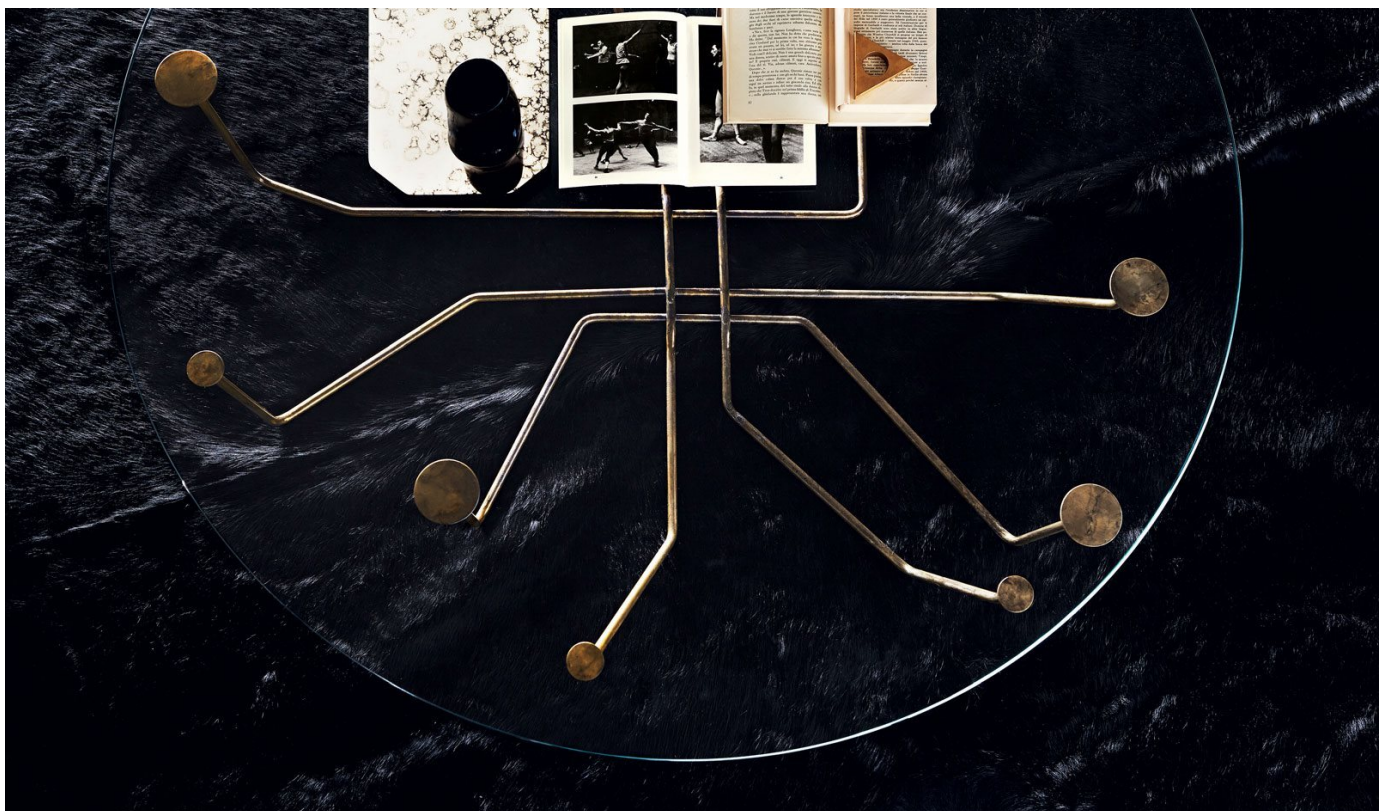
Ø 19¾" x 17¾" h

Ø 27¾" x 15" h

42¼" x 27¾" x 17¾" h Double



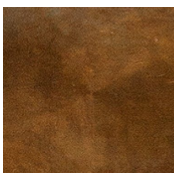




*Cristallo / Glass*

*Extralight*  
*Extralight*

---

*Metallo / Metal*

*Ottone brunito*  
*a mano*  
*Hand*  
*burnished*  
*brass*