
Thea

Pinuccio Borghonovo
2015



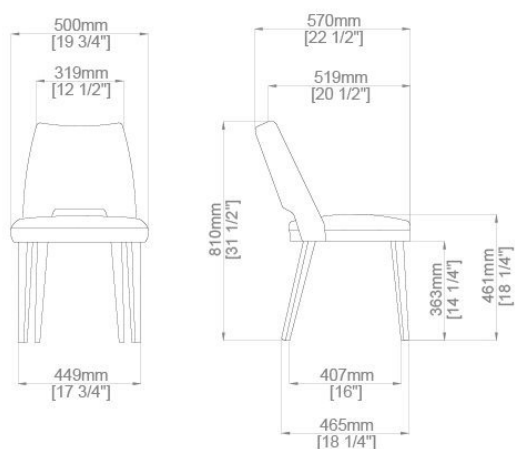
Thea

Pinuccio Borgonovo , 2015

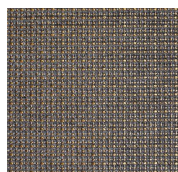
Sedia con seduta e schienale rivestiti in velluto. Gambe in legno laccato nero (mod. Layer) poro aperto.

Chair with seat and backrest covered by velvet. Black (mod. Layer) open pore lacquered wooden legs. Seat and backrest covered by fabric or leather as per sample.

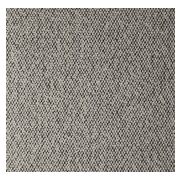
Dimensioni / Sizes
Cm
50 x 57 x 81h
Inches
19¾" x 22½" x 32"





Tessuto Cat.A / Fabric Cat.A

Mesh ochre 006
Mesh ochre 006



Reggio mink
010
Reggio mink
010



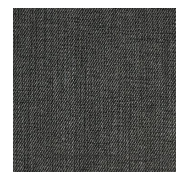
Reggio taupe
070
Reggio taupe
070



Russel canapa
002
Russel canapa
002



Russel clay
003
Russel clay
003



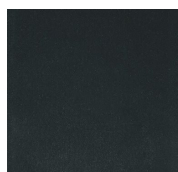
Russel dark
grey 017
Russel dark
grey 017



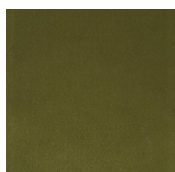
Russel mink
016
Russel mink
016



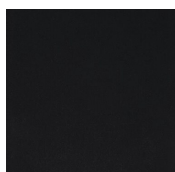
Russel violet
008
Russel violet
008

Velluto Cat.A / Velvet Cat.A

Velvet blue 408
Velvet blue 408



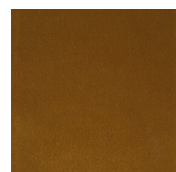
Velvet evo green
7215
Velvet evo green
7215



Velvet ink
black 800
Velvet ink
black 800



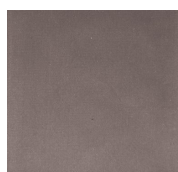
Velvet mink
518
Velvet mink
518



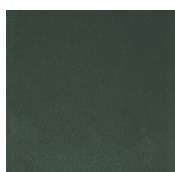
Velvet ochre
1688
Velvet ochre
1688



Velvet pearl
206
Velvet pearl
206



Velvet rose
powder 4512
Velvet rose
powder 4512



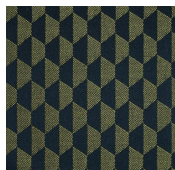
Velvet sage
green 6381
Velvet sage
green 6381



Velvet taupe
537
Velvet taupe
537

Tessuto Cat.B / Fabric Cat.B

*Avassi blue
039
Avassi blue
039*



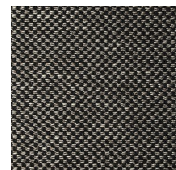
*Avassi evo
green 041
Avassi evo
green 041*



*Avassi
liquorice black
033
Avassi
liquorice black
033*



*Damié grey
082
Damié grey
082*



*Damié
liquorice black
011
Damié
liquorice black
011*



*Damié rose
powder 111
Damié rose
powder 111*



*Damié sand
031
Damié sand
031*



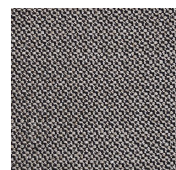
*Diago clay 511
Diago clay 511*



*Diago milk
500
Diago milk
500*



*Diago violet
530
Diago violet
530*



*Perseo black
001
Perseo black
001*



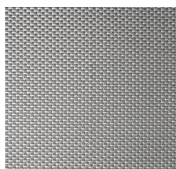
*Perseo clay
022
Perseo clay
022*



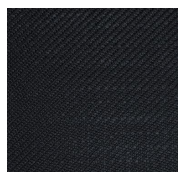
*Sofi canapa
100
Sofi canapa
100*



*Sofi grey 062
Sofi grey 062*

Tessuto Cat.C / Fabric Cat.C

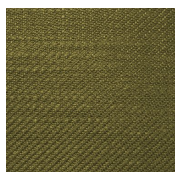
*Corbezzolo
cement 500
Corbezzolo
cement 500*

Tessuto Cat.D / Fabric Cat.D

*Gioiello blue
grey 010
Gioiello blue
grey 010*



*Gioiello dark
grey 028
Gioiello dark
grey 028*



*Gioiello evo
green 042
Gioiello evo
green 042*



*Gioiello milk
013
Gioiello milk
013*



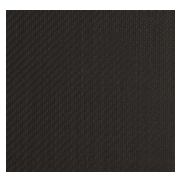
*Gioiello ochre
032
Gioiello ochre
032*



*Gioiello
peacock 041
Gioiello
peacock 041*



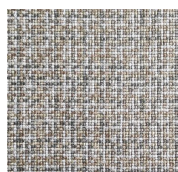
*Gioiello sand
029
Gioiello sand
029*



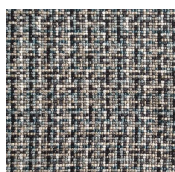
*Gioiello taupe
031
Gioiello taupe
031*



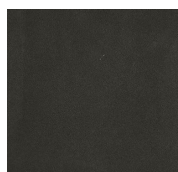
*Gioiello violet
030
Gioiello violet
030*

Tessuto Cat.Extra / Fabric Cat.Extra

*Pixel cement
001
Pixel cement
001*



*Pixel peacock
003
Pixel peacock
003*

Pelle Cat.L1 / Leather Cat.L1

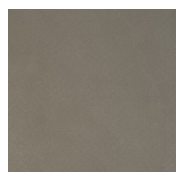
*Suede grey 020
Suede grey 020*



*Suede grey 058
Suede grey 058*



*Suede grey 074
Suede grey 074*



*Suede sand
006
Suede sand
006*

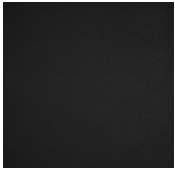


*Suede sand 012
Suede sand 012*

Thea

Finiture / Finishes

Pelle Cat.L2 / Leather Cat.L2



*Leather black
101
Leather black
101*



*Leather canapa
199
Leather canapa
199*



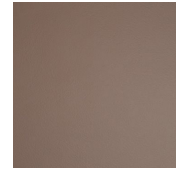
*Leather clay
207
Leather clay
207*



*Leather
liquorice black
147
Leather
liquorice black
147*



*Leather milk
195
Leather milk
195*



*Leather rose
powder 239
Leather rose
powder 239*

Legno / Wood



*Nero poro
aperto (Layer)
Black open pore
(Layer)*