
Thea Queen



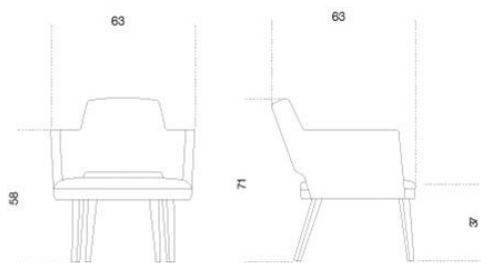
Thea Queen

Sedia lounge con seduta e schienale rivestiti in velluto. Gambe in legno laccato nero (mod. Layer) poro aperto.

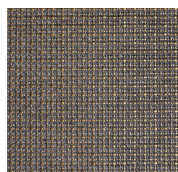
Upholstered armchair covered by fabric or leather. Black (mod. Layer) open pore lacquered ash legs. Seat and backrest covered by fabric or leather as per sample.

Dimensioni / Sizes
Cm
63 x 63 x 80h
63 x 63 x 71h Lounge

Inch
25" x 25" x 31½"h
25" x 25" x 28"h Lounge



Tessuto Cat.A / Fabric Cat.A



Mesh ochre 006
Mesh ochre 006



Reggio mink 010
Reggio mink 010



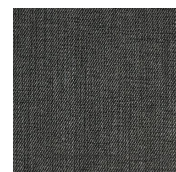
Reggio taupe 070
Reggio taupe 070



Russel canapa 002
Russel canapa 002



Russel clay 003
Russel clay 003



Russel dark grey 017
Russel dark grey 017

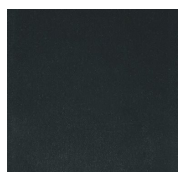


Russel mink 016
Russel mink 016

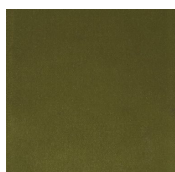


Russel violet 008
Russel violet 008

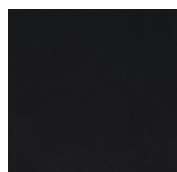
Velluto Cat.A / Velvet Cat.A



Velvet blue 408
Velvet blue 408



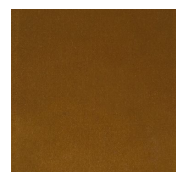
Velvet evo green 7215
Velvet evo green 7215



Velvet ink black 800
Velvet ink black 800



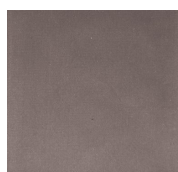
Velvet mink 518
Velvet mink 518



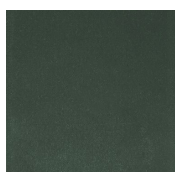
Velvet ochre 1688
Velvet ochre 1688



Velvet pearl 206
Velvet pearl 206



Velvet rose powder 4512
Velvet rose powder 4512

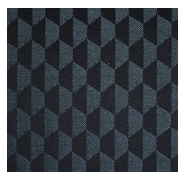


Velvet sage green 6381
Velvet sage green 6381

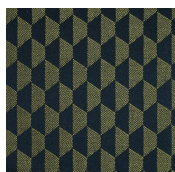


Velvet taupe 537
Velvet taupe 537

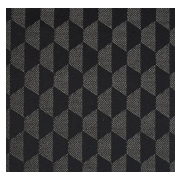
Tessuto Cat.B / Fabric Cat.B



Avassi blue
039
Avassi blue
039



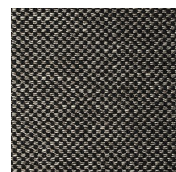
Avassi evo
green 041
Avassi evo
green 041



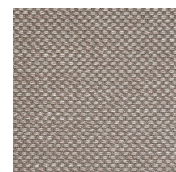
Avassi
liquorice black
033
Avassi
liquorice black
033



Damié grey
082
Damié grey
082



Damié
liquorice black
011
Damié
liquorice black
011



Damié rose
powder 111
Damié rose
powder 111



Damié sand
031
Damié sand
031



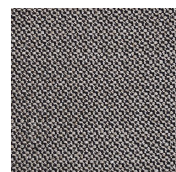
Diago clay 511
Diago clay 511



Diago milk
500
Diago milk
500



Diago violet
530
Diago violet
530



Perseo black
001
Perseo black
001



Perseo clay
022
Perseo clay
022

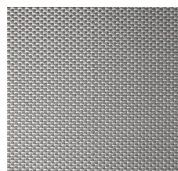


Sofi canapa
100
Sofi canapa
100



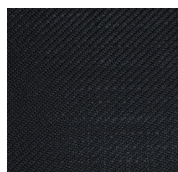
Sofi grey 062
Sofi grey 062

Tessuto Cat.C / Fabric Cat.C



Corbezzolo
cement 500
Corbezzolo
cement 500

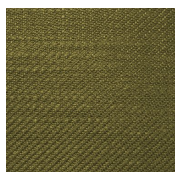
Tessuto Cat.D / Fabric Cat.D



*Gioiello blue
grey 010
Gioiello blue
grey 010*



*Gioiello dark
grey 028
Gioiello dark
grey 028*



*Gioiello evo
green 042
Gioiello evo
green 042*



*Gioiello milk
013
Gioiello milk
013*



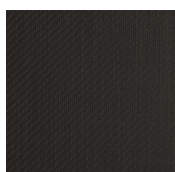
*Gioiello ochre
032
Gioiello ochre
032*



*Gioiello
peacock 041
Gioiello
peacock 041*



*Gioiello sand
029
Gioiello sand
029*

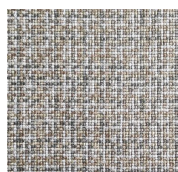


*Gioiello taupe
031
Gioiello taupe
031*

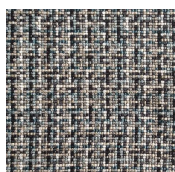


*Gioiello violet
030
Gioiello violet
030*

Tessuto Cat.Extra / Fabric Cat.Extra

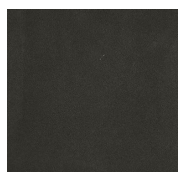


*Pixel cement
001
Pixel cement
001*



*Pixel peacock
003
Pixel peacock
003*

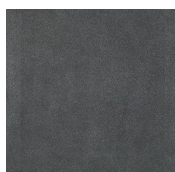
Pelle Cat.L1 / Leather Cat.L1



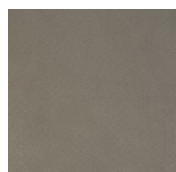
*Suede grey 020
Suede grey 020*



*Suede grey 058
Suede grey 058*



*Suede grey 074
Suede grey 074*

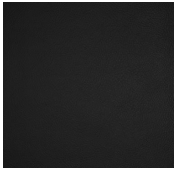


*Suede sand
006
Suede sand
006*



*Suede sand 012
Suede sand 012*

Pelle Cat.L2 / Leather Cat.L2



*Leather black
101
Leather black
101*



*Leather canapa
199
Leather canapa
199*



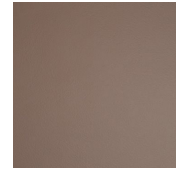
*Leather clay
207
Leather clay
207*



*Leather
liquorice black
147
Leather
liquorice black
147*



*Leather milk
195
Leather milk
195*



*Leather rose
powder 239
Leather rose
powder 239*

Legno / Wood



*Nero poro
aperto (Layer)
Black open pore
(Layer)*
