

MAD KING

MARCEL WANDERS (2015)



DESCRIPTION

A slender image that takes on a brand new appearance, determined by its asymmetrical composition: Mad King is a tall armchair in which one of the arms can be replaced with a fine and useful wooden tray. The legs are available in wood or covered in fabric and leather, for complete uniformity with the seat.

Poliform

MAD KING

MARCEL WANDERS (2015)



TECHNICAL DESCRIPTION

TPOLOGY

armchair

Structure

flexible moulded polyurethane

Pre-cover

polyester padding

Cover

stretched, non removable cover in fabric - leather

Legs

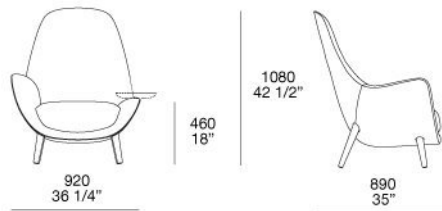
solid wood

Poliform

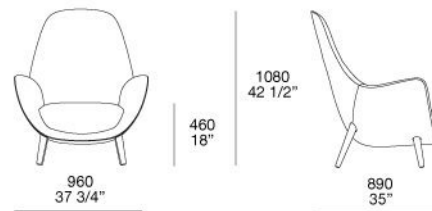
MAD KING

MARCEL WANDERS (2015)

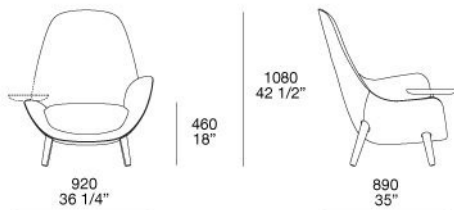
IMAPK920X



IMAPK950

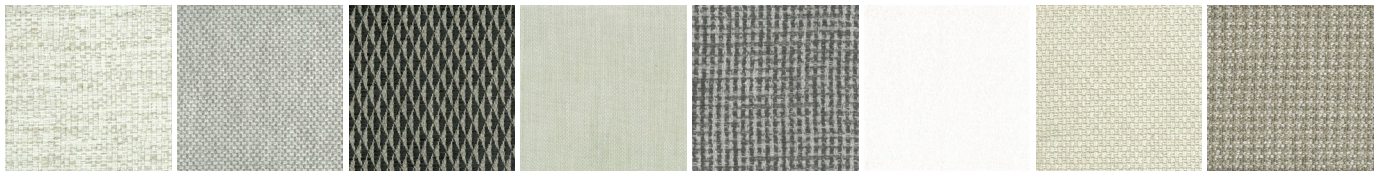


IMAPK920Z



MAD KING

FINISHINGS\LEGS\FABRIC (35)



CHIOS

ARGO

CORINTO

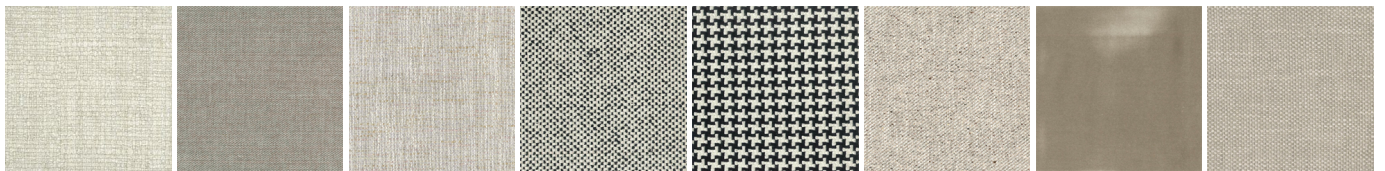
ITACA

MILOS

OLIMPIA

PAROS

ZANTE



SPARTA

SALFORD

ORLEANS

DERBY

LIMOGES

OXFORD

PERSIA

RABAT



MERIDA

HANNOVER

CORDOBA

CALEDONIA

NORWAY

ASPEN

ATLANTA

BERLINO



KYOTO

LIMA

MELBOURNE

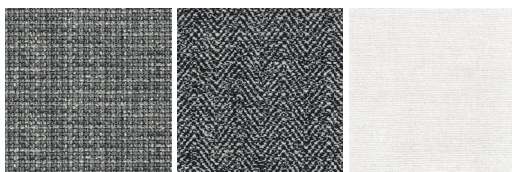
PORTO

REIMS

SAVANA

SIVIGLIA

INDRA - NEW



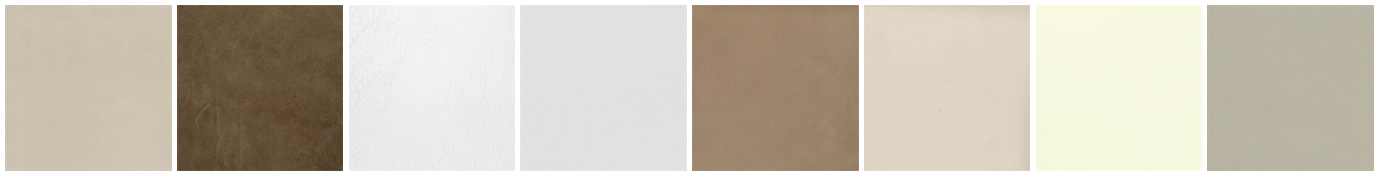
LIPSI - NEW

SKYROS -
NEW

NAXOS - NEW

MAD KING

FINISHINGS\LEGS\LEATHER (8)



NABUK
LEATHER

VINTAGE
LEATHER

SUPER
LEATHER

PELLE
SPECIAL

AGED-
LOOKING
LEATHER

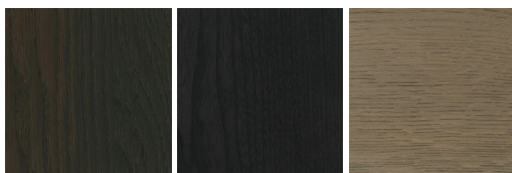
COLORS
LEATHER

SPRING
LEATHER

SOFT
LEATHER

MAD KING

FINISHINGS\LEGS\WOODS (3)



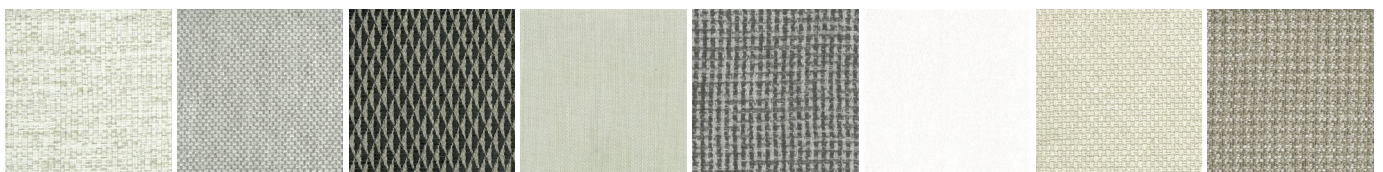
SPESSART
OAK

BLACK ELM

CENERO OAK

MAD KING

FINISHINGS\COVER\FABRIC (35)



CHIOS

ARGO

CORINTO

ITACA

MILOS

OLIMPIA

PAROS

ZANTE



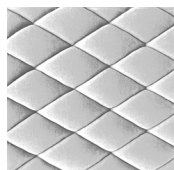
MAD KING

FINISHINGS\COVER\LEATHER (8)



MAD KING

FINISHINGS\COVER\GIBSON (1)



GIBSON