

GASTON

VINCENT VAN DUYSSEN (2008)



DESCRIPTION

Gentlemanly name, elegant features... The Poliform armchair, born of the collaboration with Vincent Van Duysen evokes an exclusiv style. Available with covering in leather or fabric to interpret a large range of stylistic definition.

Poliform

GASTON

VINCENT VAN DUYSSEN (2008)



TECHNICAL DESCRIPTION

TPOLOGY

armchair

STRUCTURE

painted metal

SEAT/BACKREST

moulded polyurethane with elements in multi-density polyurethane foam and feathers

PRE-COVER

tela cotton e polyester padding

FINAL COVER

removable in fabric non removable in leather

LEATHER ARMREST

like cushions in leather-imitation leather models; like structure colour in fabric models

Poliform

GASTON

VINCENT VAN DUYSSEN (2008)

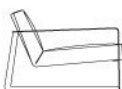
GAPL780



780
30 3/4"

410
16 1/4"

680
26 3/4"

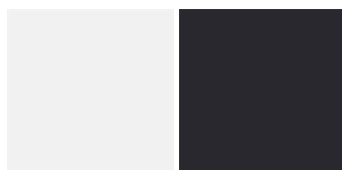


900
35 1/2"



GASTON

FINISHINGS\STRUCTURE\PAINTED GLOSSY METAL (2)

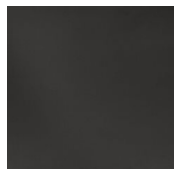


BIANCO

NERO

GASTON

FINISHINGS\STRUCTURE\ BROWN NICKEL MAT PAINTED (1)



BROWN
NICKEL MAT
PAINTED

GASTON

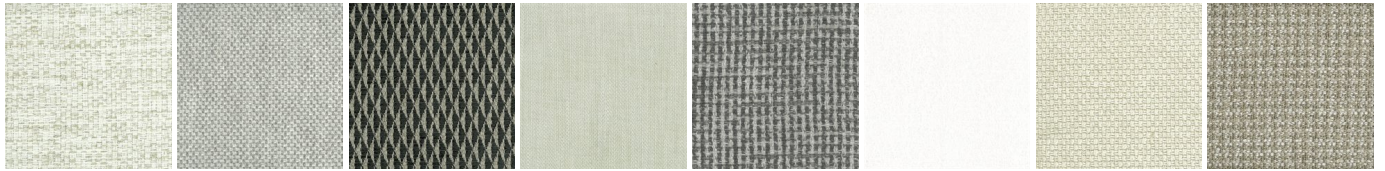
FINISHINGS\STRUCTURE\GLOSSY PAINTEDBROWN NICKEL (1)



GLOSSY
PAINTEDBRO
WN NICKEL

GASTON

FINISHINGS\SEAT\FABRIC (35)



CHIOS

ARGO

CORINTO

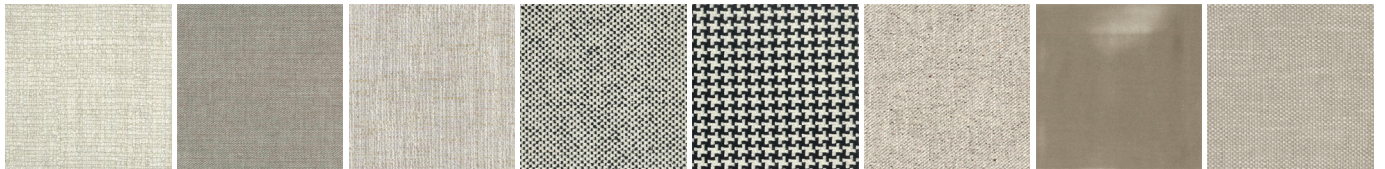
ITACA

MILOS

OLIMPIA

PAROS

ZANTE



SPARTA

SALFORD

ORLEANS

DERBY

LIMOGES

OXFORD

PERSIA

RABAT



MERIDA

HANNOVER

CORDOBA

CALEDONIA

NORWAY

ASPEN

ATLANTA

BERLINO



KYOTO

LIMA

MELBOURNE

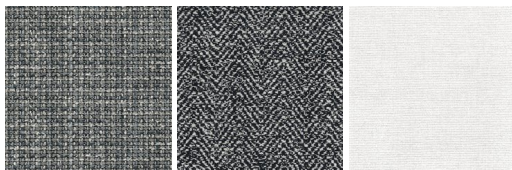
PORTO

REIMS

SAVANA

SIVIGLIA

INDRA - NEW



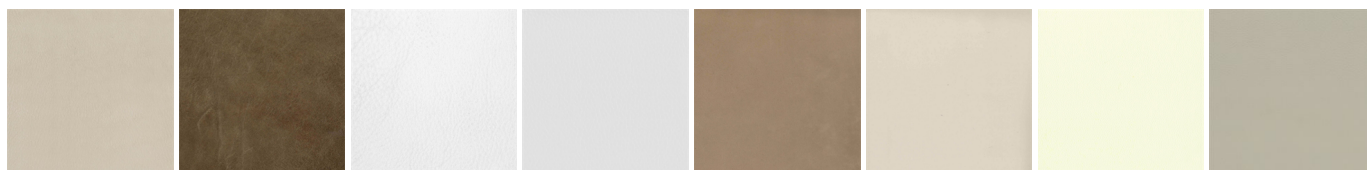
LIPSI - NEW

SKYROS -
NEW

NAXOS - NEW

GASTON

FINISHINGS\SEAT\LEATHER (8)



NABUK
LEATHER

VINTAGE
LEATHER

SUPER
LEATHER

PELLE
SPECIAL

AGED-
LOOKING
LEATHER

COLORS
LEATHER

SPRING
LEATHER

SOFT
LEATHER