

# JANE

EMMANUEL GALLINA (2017)



## DESCRIPTION

The inspiration springs from the desire to conceive a collection with small sizes that would build a sense of comfort and intimacy. The design plays with subtle lines, where gentle inclinations and curves bestow the object with a dynamic personality. The finishes – metal or wood for the structure – give it both a classic and contemporary identity. With its cosy, enveloping lines the Jane collection interprets spaces where elegance is at the service of relaxation.

**Poliform**

# JANE

EMMANUEL GALLINA (2017)



## TECHNICAL DESCRIPTION

### TYPOLOGIE

seat system

### Structure

in flexible moulded polyurethane

### Base

solid wood or metal with feet in painted aluminium

### Seat padding

flexible multi-density polyurethane

### Pre-cover

polyester padding

### Cover finale stretched

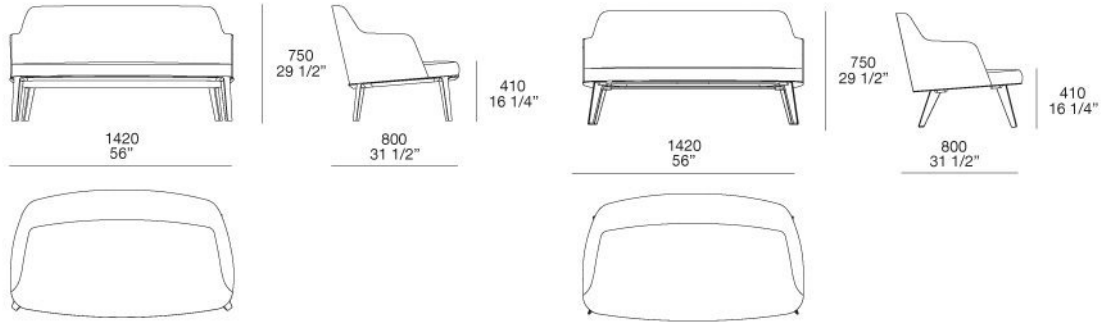
removable cover in fabric and not removable in leather

**Poliform**

# JANE

EMMANUEL GALLINA (2017)

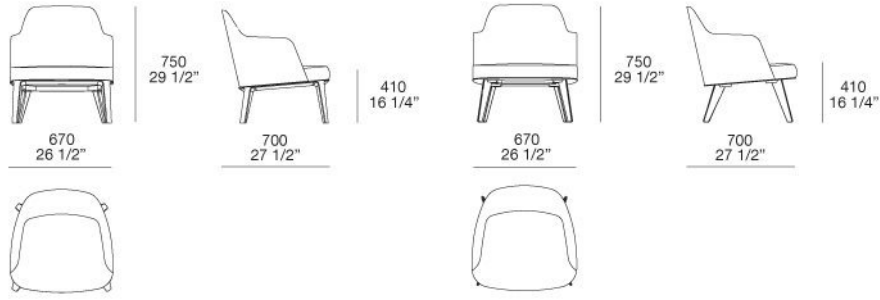
## JNDI142



Basamento Legno / Wooden Base

Basamento Metallo / Metal Base

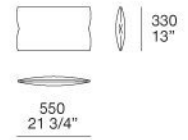
## JNPL067



Basamento Legno / Wooden Base

Basamento Metallo / Metal Base

## JNPR001



## JNPN130

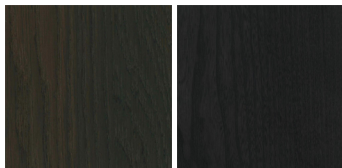


## JNPP130



# JANE

FINISHINGS\BASE\WOODS (2)

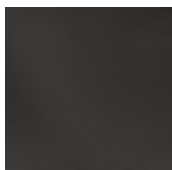


SPESSART  
OAK

BLACK ELM

# JANE

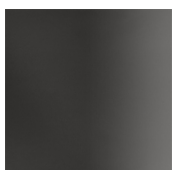
FINISHINGS\ALUMINUM FEET\ BROWN NICKEL MAT PAINTED (1)



BROWN  
NICKEL MAT  
PAINTED

# JANE

FINISHINGS\ALUMINUM FEET\GLOSSY PAINTEDBROWN NICKEL (1)

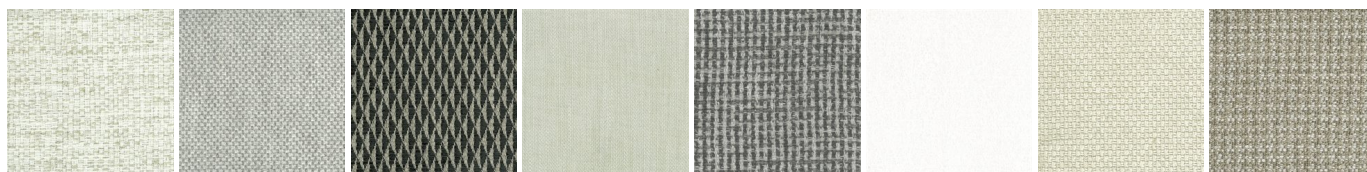


GLOSSY  
PAINTEDBRO  
WN NICKEL



# JANE

FINISHINGS\SEAT\FABRIC (31)



CHIOS

ARGO

CORINTO

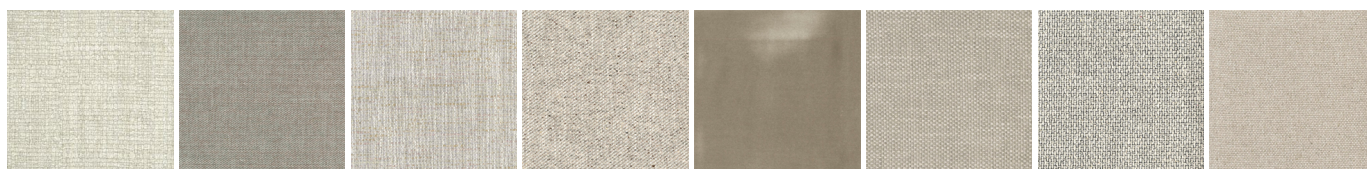
ITACA

MILOS

OLIMPIA

PAROS

ZANTE



SPARTA

SALFORD

ORLEANS

OXFORD

PERSIA

RABAT

MERIDA

HANNOVER



CORDOBA

CALEDONIA

NORWAY

ASPEN

ATLANTA

BERLINO

KYOTO

LIMA



MELBOURNE

PORTO

SIVIGLIA

INDRA

LIPSI

SKYROS

NAXOS

# JANE

FINISHINGS\SEAT\LEATHER (8)



NABUK  
LEATHER

VINTAGE  
LEATHER

SUPER  
LEATHER

PELLE  
SPECIAL

AGED-  
LOOKING  
LEATHER

COLORS  
LEATHER

SPRING  
LEATHER

SOFT  
LEATHER