

# NONARO

Design: Luigi Caccia Dominioni, 1959-1961

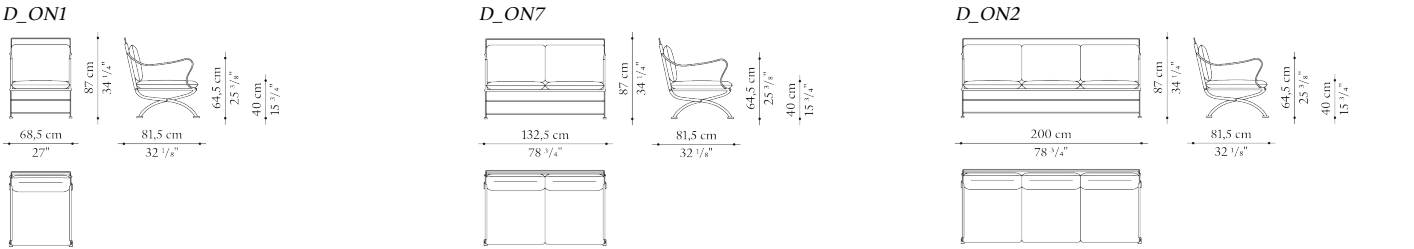


In marrying art with design, Caccia Dominioni borrowed from classic Italian garden decor, frescoes from ancient Rome and Renaissance painting. The result is a sophisticated harmony of curves that define the seating system with its delicate armrests and legs. But he was also inspired by memories of a garden chair in the 18th century family Villa Il Nonaro in Varese. Nonaro today is a collection of garden furniture with generously upholstered cushions for maximum comfort. Here we have an authentic contemporary classic, perfect for admiring the surrounding beauty, and that for decades has graced the grandest gardens and terraces around the world.

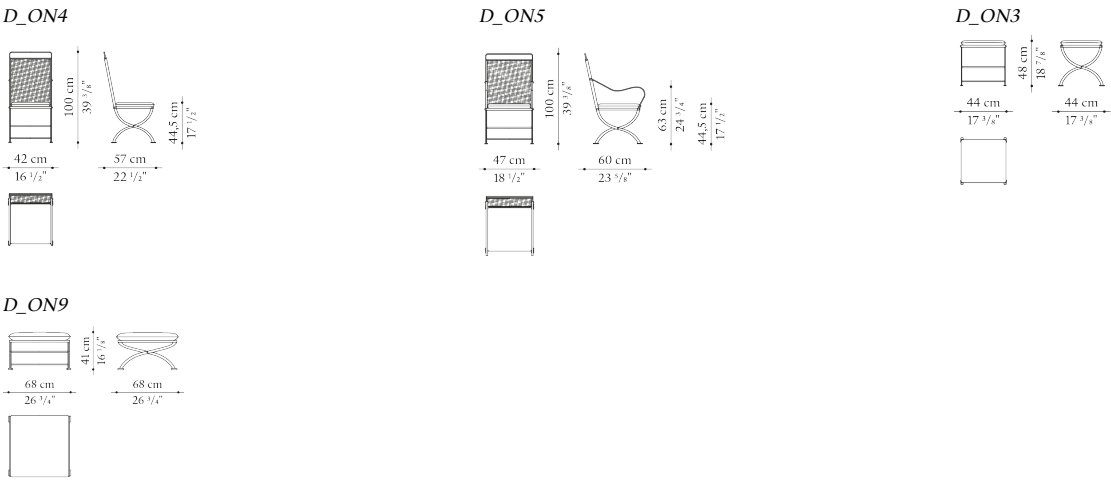
**AZUCENA**

Technical data

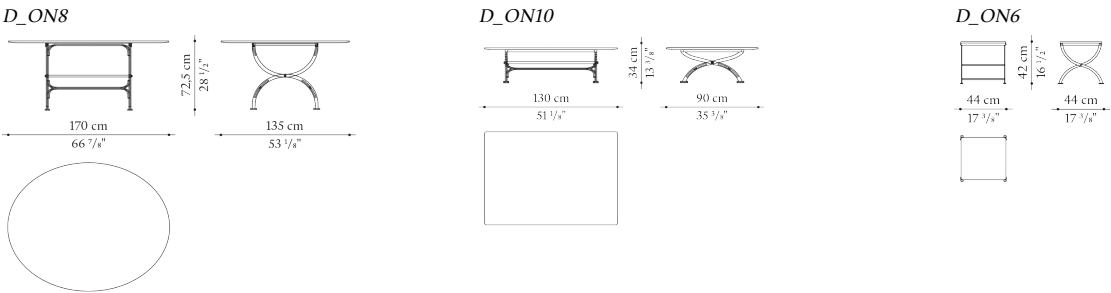
Armchair, two-seater and three-seater sofa



Chair, chairs with armrests and stools



Oval table, rectangular low table and square small table



<i>Frame and mesh</i>	painted metal	<i>Upholstery</i>	shaped polyurethane, cover in water repellent polyester fibre
<i>Top</i>	slate	<i>Ferrules</i>	plastic material
<i>Cover</i>	fabric		

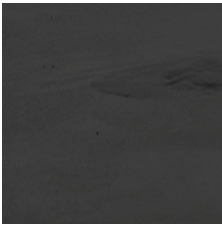
**NONARO**

Design: Luigi Caccia Dominioni, 1959-1961

Finishes



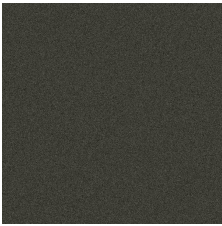
Stones



0959A  
Slate



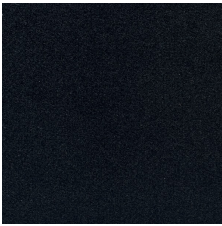
Metals



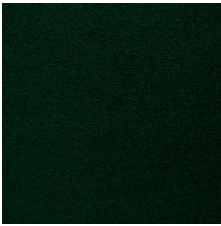
0799M  
Metallic grey finish



Fabrics



2970150  
Fabric Wood black



2970400  
Fabric Wood green



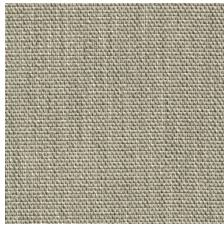
2970763  
Fabric Wood bordeaux



2970800  
Fabric Wood blue



2498203  
Fabric Leila sand



2498207  
Fabric Leila rope