

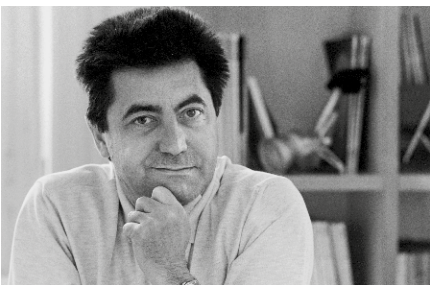


The requirements placed on today's office spaces are more diverse than ever. Highly varying tasks – from creative processes and intensive team projects to administrative responsibilities and concentrated individual work – demand versatile solutions.

The modular office table system CDS caters to these requirements: it can be configured as individual tables, clusters of multiple workstations, spacious workbenches or meeting tables in various sizes. All are available either at a fixed height or as manual or motor-operated sit-stand solutions.

The authentic industrial aesthetic of CDS conveys the character of a system founded on technical solutions. This impression is underscored by its structural details. The most practical approach was taken for each function. Easily accessible power options, cable baskets and cable guides keep work areas tidy, while privacy is ensured by the screens and the cleverly designed roller blinds, which are automatically supported by the higher of the table tops when raising or lowering the tables. In addition, discreet technical rails flush with the work surface can be fitted with desktop monitor and lamp holders, as well as containers and accessories, without the need for any tools.

The office table system is designed with a standard base frame, which is largely preassembled with fold-out legs. This allows CDS to fulfil the most stringent demands for flexibility in planning, use, logistics, assembly and maintenance.



Antonio Citterio
The architect and designer Antonio Citterio, who lives and works in Milan, has collaborated with Vitra since 1988. Together they have produced a series of office chairs and various office systems, as well as products for the Vitra Home Collection. The Citterio Collection is constantly being expanded.

1	CDS	8-9	Electrification	16-17	Cluster
2-3	Tables	10-11	Accessories	18-25	Dimensions
4-5	Table tops	12-13	Bench	26-27	Colours and surfaces
6-7	Screens	14-15	Platform		



Single table

The CDS range includes single tables in a choice of two frame widths (160 and 180 cm), both 80 cm deep. The table system is designed with a standard base frame, which is largely preassembled and fitted with fold-out legs. This allows CDS to comply with the most stringent demands when it comes to planning flexibility, use, logistics, assembly and maintenance.



Space-saving configuration for transport and storage



Tool-free assembly of table top



CDS double table/cluster

CDS also offers double tables, so-called clusters, in the same two frame widths (160 and 180 cm), each with a standard depth of 80 cm. The distinctive feature of the cluster is that the two tables share the same base frame. This follows the same principle as single tables and offers the same advantages, with the added benefit of needing only one frame for two tables.



The bridge leg links two tables to form a cluster



Simple assembly or reconfiguration thanks to single and bridge legs



Table tops for single tables and clusters

CDS table tops come in a choice of two sizes for each respective frame width: one version ends flush with the frame – 160 or 180 cm – and the other is 30 cm wider. The latter can be centre-mounted or aligned on the left or right. These options ensure greater planning flexibility.



Table top 160 or 180 cm, flush

Table top 190 or 210 cm, centre-mounted



Table top 190 or 210 cm, aligned on right

Table top 190 or 210 cm, aligned on left



Height adjustment

The CDS office system caters to individual needs: desks in various sizes can be outfitted to accommodate the ergonomic requirements of each workstation. Users can choose from the following options:



Tables with a fixed height of 74 cm



Tables with crank for different sitting heights from 65 to 85 cm



Sit-stand workstations with electric height adjustment from 65 to 125 cm

Further variations in height adjustment and columns can be selected for projects.
For more information, please talk to your contact in the Vitra Sales Team.

Type of column	Adjustable range (in mm)
Incremental (Sit-stand)	700–1180 mm
Crank (Sit-stand)	700–1180 mm
Fast crank 1 (Sit-stand)	700–1180 mm
Fast crank 2 (Sit-stand)	650–1250 mm
Electro (Sit-stand)	7000–1180 mm



Screens for single tables

Screens for single tables come in standard or sound-absorbing versions.



Single screen for table width 160 or 180, standard or acoustic version



Insertable screen, standard version only

	Single	Cluster	Bench	Platform	Meeting
1	•	•	•	•	
2	•	•	•	•	
3		•	•	•	
4		•	•	•	
5	•	•	•	•	
6		•	•		•



Screens for clusters

Screens are available in a choice of three versions for clusters: standard or sound-absorbing screen and cleverly designed roller blind version. The latter is automatically supported by the higher of the tops with electric height-adjustable tables, and can be converted from a screen into a modesty panel – and back again – in just seconds with the aid of an adapter. Clusters can also be used with side screens in the standard and sound-absorbing version, as well as with a standing acoustic screen.

Combined with this wide range of different screen options, CDS can be adapted to individual user requirements, while also creating furnishings that can be used to lend structure to spaces and define walkways.



Cluster roller blind with adapter, as a visual screen



Cluster roller blind without adapter, as a modesty panel



Cluster screen for table width 160 or 180, standard or acoustic version

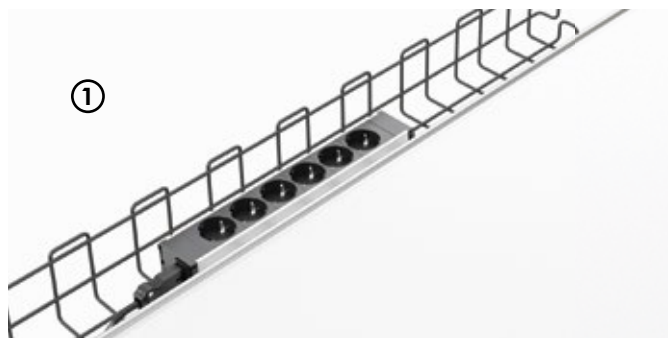


Cluster side screen, standard or acoustic version; standing screen, acoustic version only



Power and data connections

A convenient and unobtrusive cable basket located underneath the table top of CDS – which can be variably positioned without the use of tools – provides easy access to power and data. This keeps the desk surface free from cables and plugs. However, the table top can also be equipped with a discreetly integrated power socket or the butterfly bracket for even easier access to power and data.



Under-table power supply in the cable basket



Table-top socket (power/USB)



Cable conduit directly from cable basket to floor socket



	Single	Cluster	Bench	Platform	Meeting
1	•	•	•	•	•
2	•	•	•	•	
3	•	•	•	•	•
4		•	•	•	
5		•	•	•	



Cable channel for horizontal cable routing



Articulated cable guide to cable channel, lateral cable conduit to floor socket



Articulated cable guide to cable channel, central cable conduit to floor socket



Articulated cable guide to cable channel, routed through leg to floor socket



Accessories

Practical additional elements and accessories, such as storage trays in various sizes, lamp and monitor adapters, a laptop tray or the handy insertable screen, enable users to personalise the third level of their workstation. These elements can be attached to the technical rail without tools by using the butterfly bracket and corresponding sleeve, which also make it possible to remove or replace elements at any time.



The butterfly bracket functions like a clamp



Attachment to technical beam



Positions are freely selectable and modifiable



Additional elements are secured to the sleeve



Elements

- 1 Butterfly bracket
- 2 Sleeve
- 3 Lamp
- 4 Monitor arm

- 5 On-table socket power
- 6 On-table socket USB
- 7 Insertable screen
- 8 Utensil tray

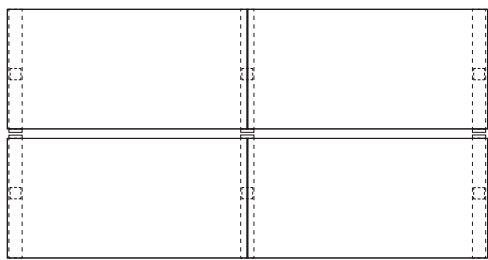
- 9 Paper tray
- 10 Binder tray
- 11 Laptop tray



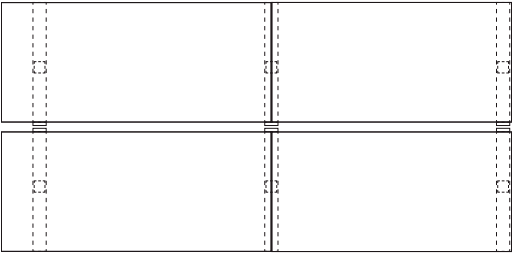
Bench

For bench solutions, two desks share a single leg base. This saves the cost of individual components (legs), and the table tops are joined at the same height.

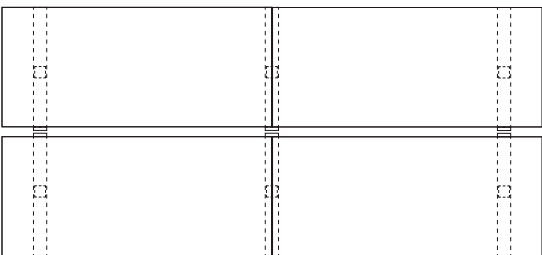
Table tops 160 & 190 and 180 & 190
Versions and example configurations



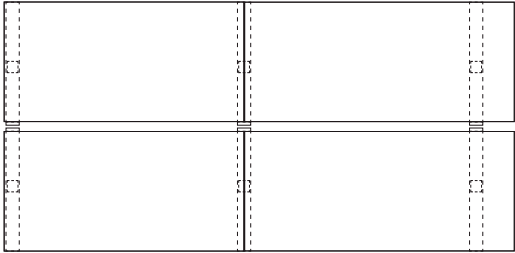
2 x 160 cm (or 2 x 180 cm), flush legs



190 & 160 cm (or 190 x 180 cm), table top protruding on left



190 & 190 cm (or 210 & 210 cm), table top protruding on left and right



160 & 190 cm (or 180 x 190 cm), table top protruding on right



Bench, height-adjustable

With height-adjustable bench solutions, one side is adjusted in height along its entire length. The standard version comes with incremental height adjustment.

Further variations in height adjustment and columns can be selected for projects.

For more information, please talk to your contact in the Vitra Sales Team.

Bench vs. cluster solution



The bench solution saves a leg. Table tops can be easily assembled without a gap. Individual height adjustment is not possible in this version.



Clusters with individual height adjustment require two legs per table top

Table height, fixed or increments CDS Bench



Tables with a fixed height of 74 cm



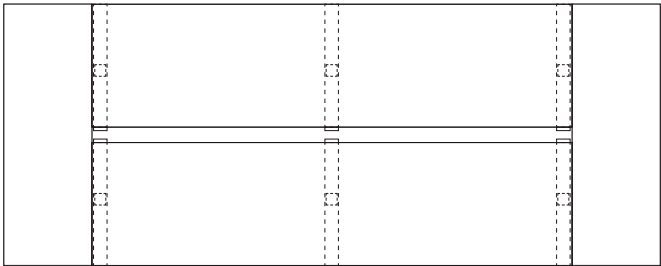
Sit-stand tables with height increments between 70 and 118 cm



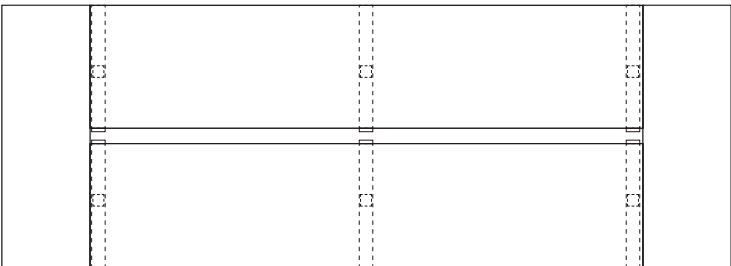
Platform

Platform with fixed end table top. Entire platform can be adjusted in height.

Platform with end table tops
Versions and example configurations



2 x 160 cm with two end table tops 60 cm



2 x 180 cm with two end table tops 60 cm

Table height, fixed or increments

Platform solutions are based on the bench design with height adjustment, and can only be adjusted in height as a whole. The standard version comes with incremental height adjustment. Further variations in height adjustment and columns are available for projects. For more information, please talk to your contact in the Vitra Sales Team.



Tables with a fixed height of 74 cm

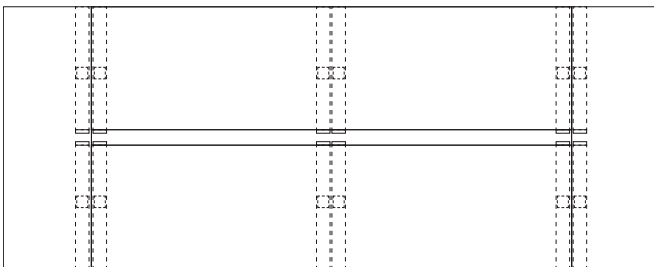


Sit-stand tables with manual incremental height adjustment (2 cm) between 70 and 118 cm

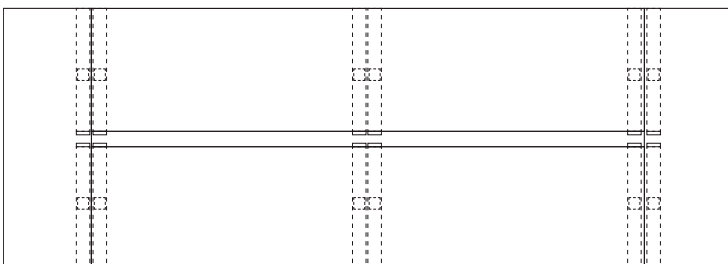


Platform with independent end table top. Individual desk tops can be adjusted in height.

Platforms with separate end table top Versions and example configurations



2 x 160 cm with two end table tops 60 cm



2 x 180 cm with two end table tops 60 cm

Fixed table height

The individual end table top is independent of the cluster and combines the technical and aesthetic features of cluster bridges, which are also used with the double workstation/cluster. With a separate end table top, the connected clusters can be individually adjusted in height. The end table top is exclusively available in a fixed height of 74 cm and can also be retrofitted. Further variations in height adjustment and columns are available for projects. For more information, please talk to your contact in the Vitra Sales Team.



Independent end table with a fixed height of 74 cm

CLUSTER

With a one-piece table top

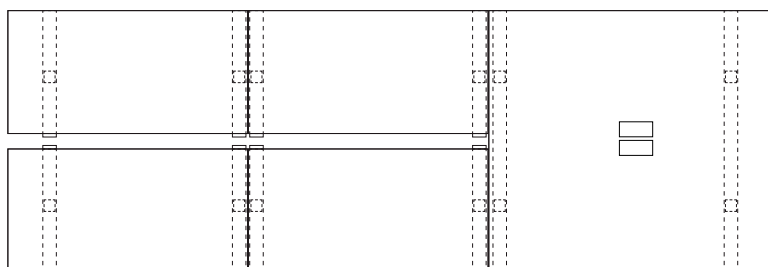
vitra.



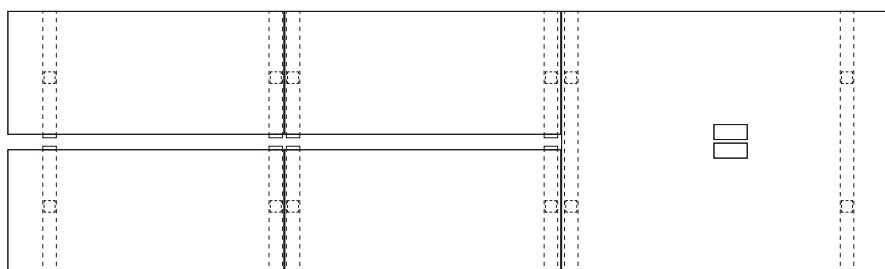
Cluster

CDS double tables with a one-piece top can be used as meeting or conference tables at the end of cluster configurations. Depending on the frame (160 or 180 cm), the table top is either 190 or 210 cm long, so that it can be used on three sides and equipped with the electrification flap.

Cluster with a one-piece table top Versions and example configurations



2x cluster 160 + 1x cluster with one-piece top 190



2x cluster 180 + 1x cluster with one-piece top 210



Tables with a fixed height of 74 cm



Sit-stand tables with manual incremental adjustment (2 cm) or electrical height adjustment between 70 and 118 cm.



Table height: fixed, increments or electrical adjustment

Clusters with a one-piece table top combine the technical and aesthetic features of a cluster base and can only be adjusted in height as a whole. The standard versions are available with incremental or electrical height adjustment, in addition to the fixed-height variant. Further variations in height adjustment and columns are available for projects. For more information, please talk to your contact in the Vitra Sales Team.

Electrification CDS cluster

Flap

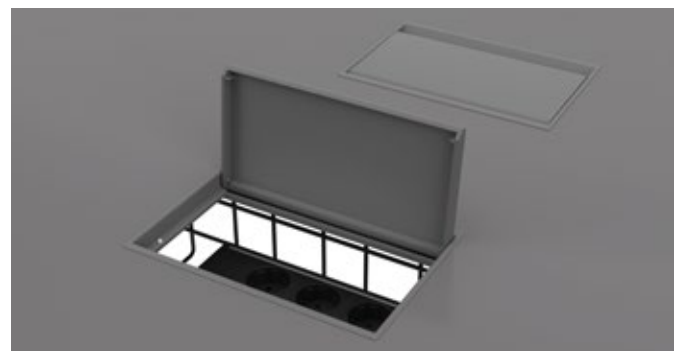
Clusters with a one-piece top can be equipped with the FLAP for electrification. Suitable solutions are available for power and data connections as required.

For further information regarding electrification or customer-specific solutions, please contact your Vitra sales representative.

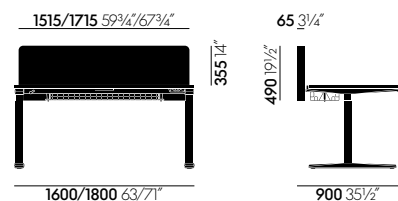
Please observe local electrical regulations.



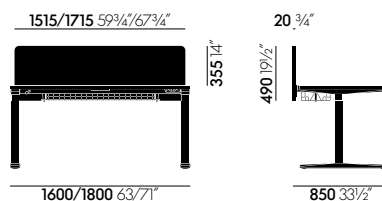
FLAP for electrification in soft light



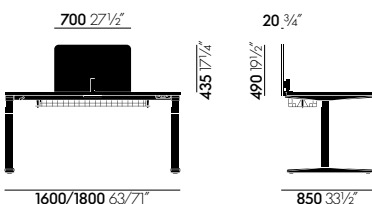
FLAP for electrification in grey



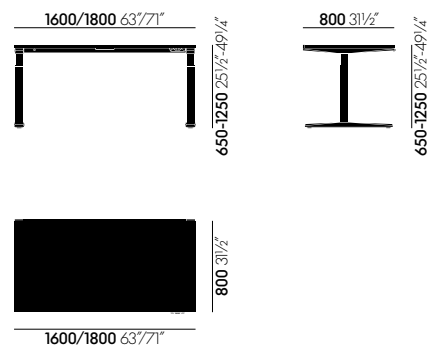
CDS Individual table with acoustic screen



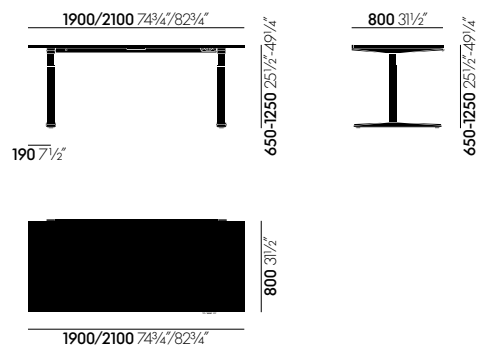
CDS Individual table with standard screen



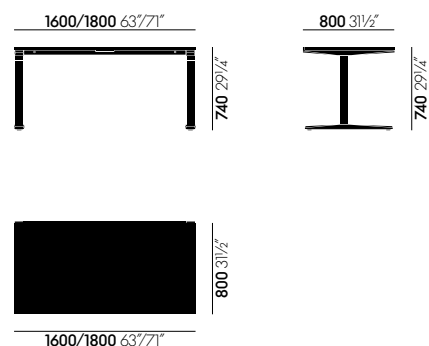
CDS Individual table with insertable screen



CDS Sit-stand table 160/180



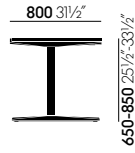
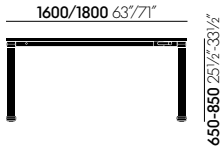
CDS Sit-stand table 190/210



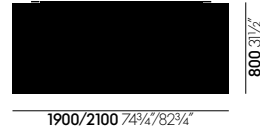
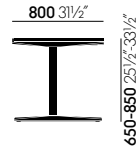
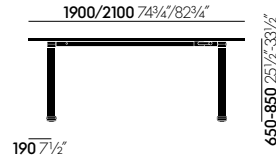
CDS Table 160/180, fixed height



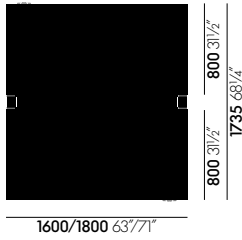
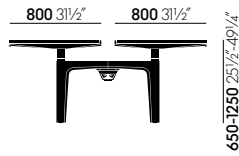
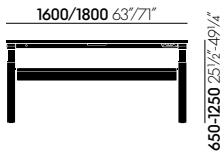
CDS Table 190/210, fixed height



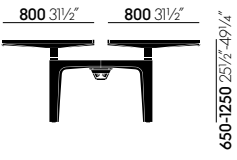
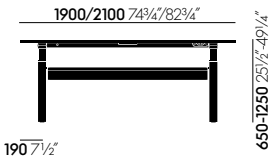
CDS Crank table 160/180



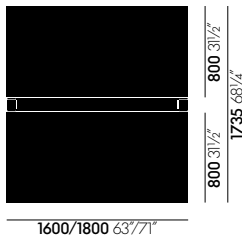
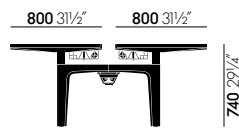
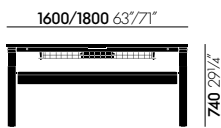
CDS Crank table 190/210



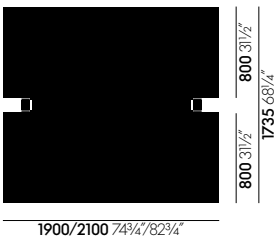
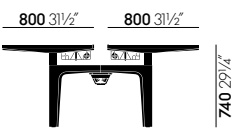
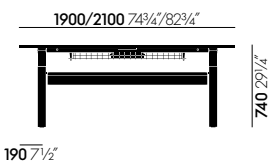
CDS Sit-stand cluster 160/180



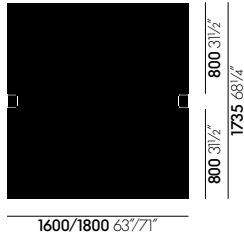
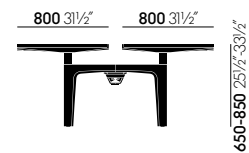
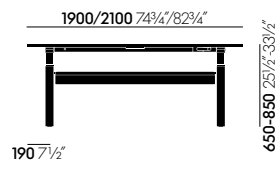
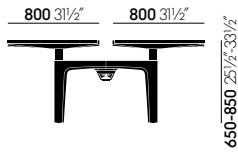
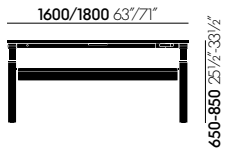
CDS Sit-stand cluster 190/210



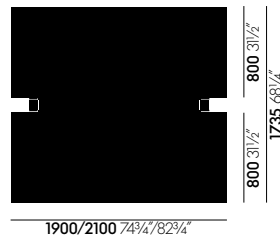
CDS Cluster 160/180, fixed height



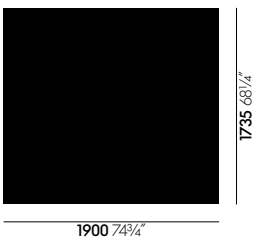
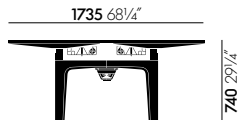
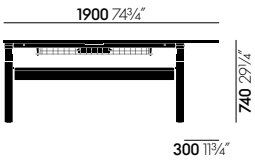
CDS Cluster 190/210, fixed height



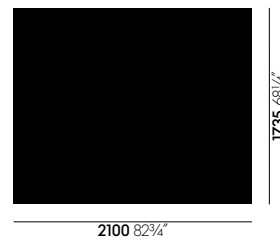
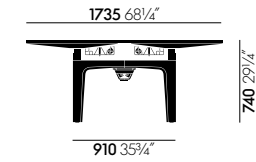
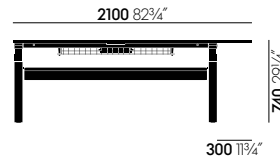
CDS Crank cluster 160/180



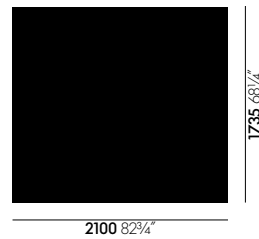
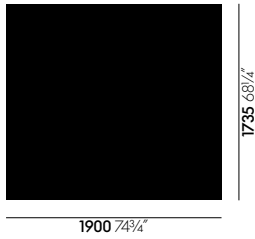
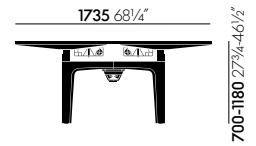
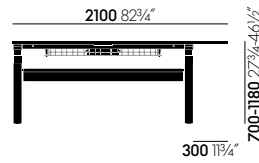
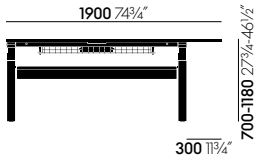
CDS Crank cluster 190/210



CDS Cluster with one-piece table top 160, fixed height

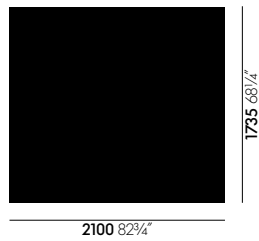
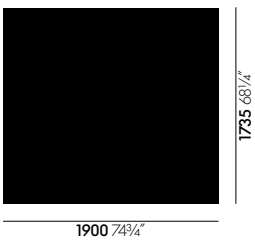
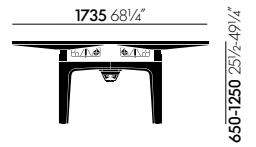
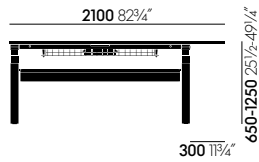
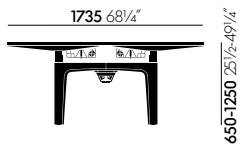
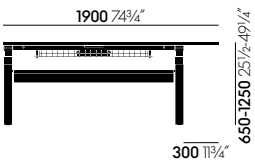


CDS Cluster with one-piece table top 180, fixed height



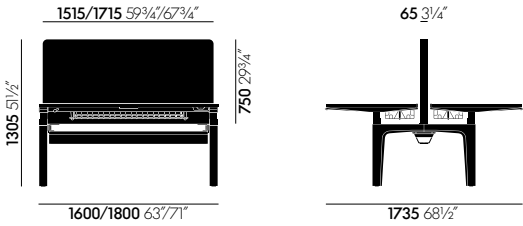
CDS Cluster with incremental height adjustment, one-piece table top 160

CDS Cluster with incremental height adjustment, one-piece table top 180

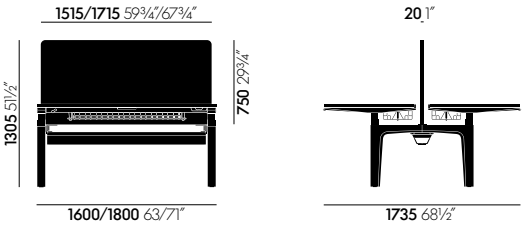


CDS Cluster with incremental height adjustment, one-piece table top 160

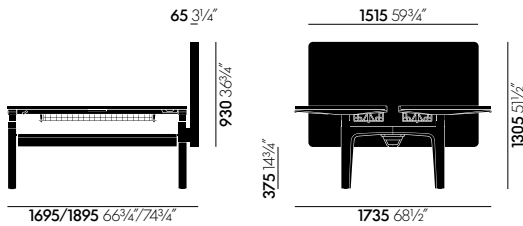
CDS Sit-stand cluster with one-piece table top 180



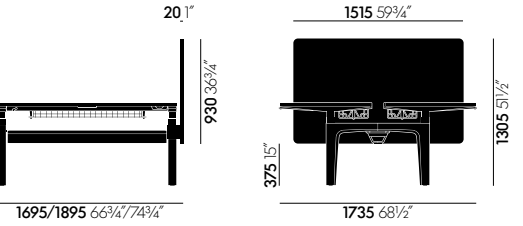
CDS Cluster with acoustic screen



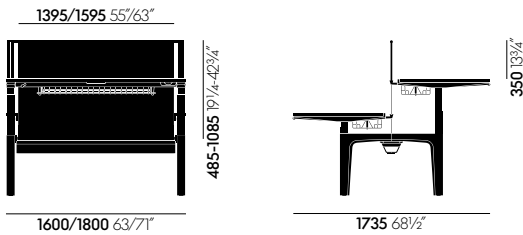
CDS Cluster with standard screen



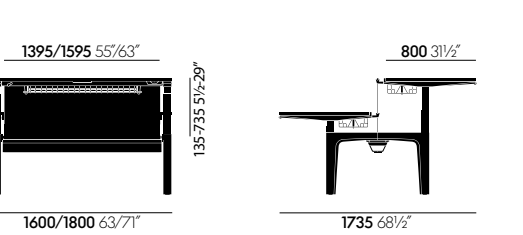
CDS Cluster with acoustic side screen



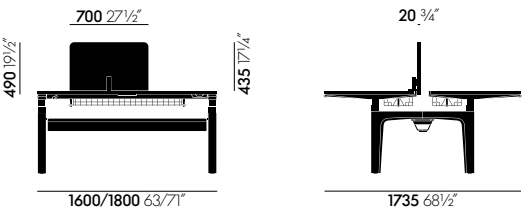
CDS Cluster with standard side screen



CDS Cluster with roller blind with adapter

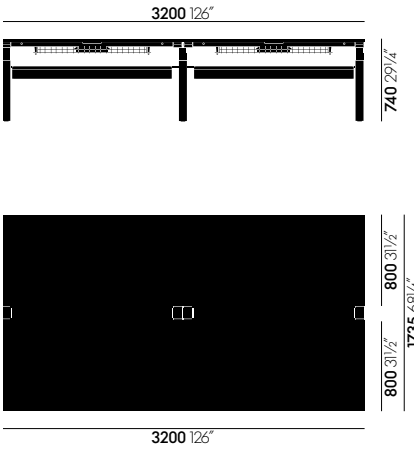


CDS Cluster with roller blind

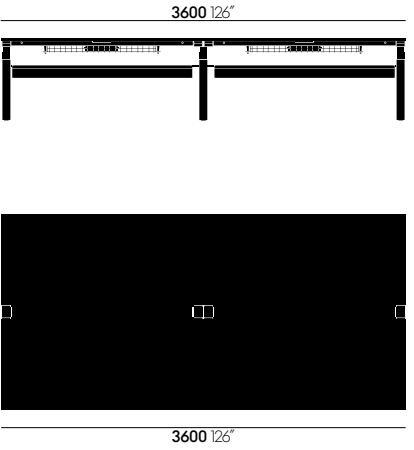
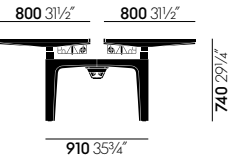


CDS Cluster with insertable screen

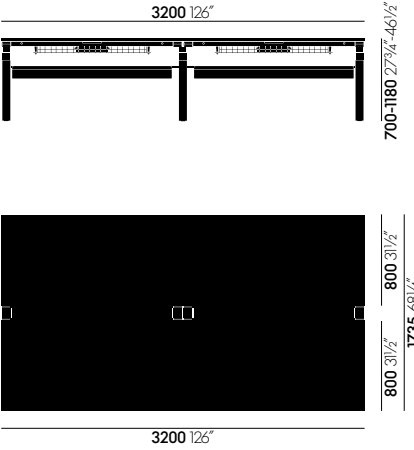
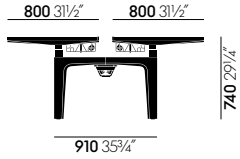
DIMENSIONS
BENCH



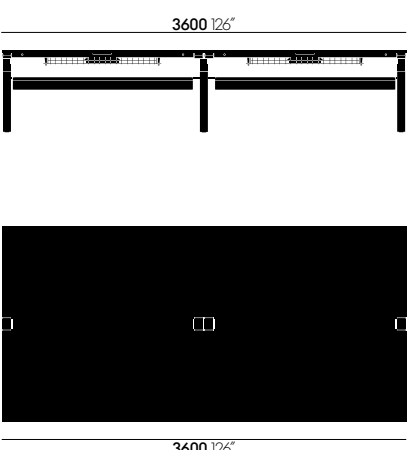
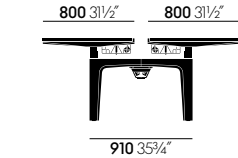
CDS Bench 320, 4 table tops, fixed height



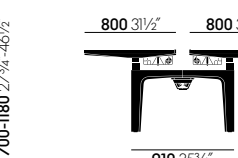
CDS Bench 360, 4 table tops, fixed height

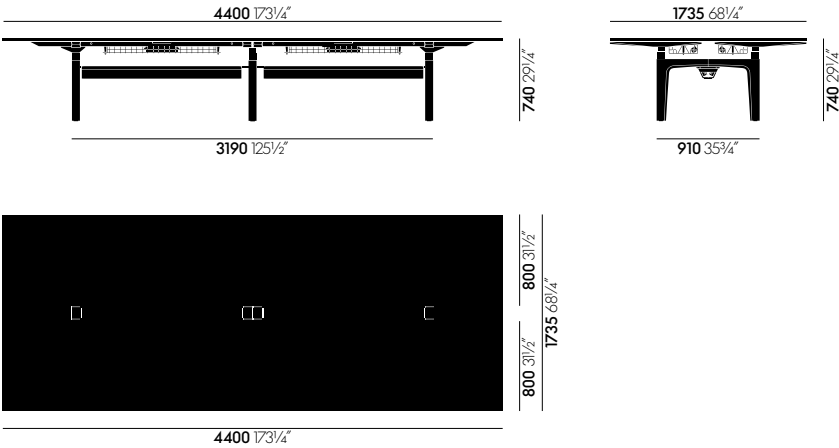


CDS Bench 320, incremental height adjustment, 4 table tops

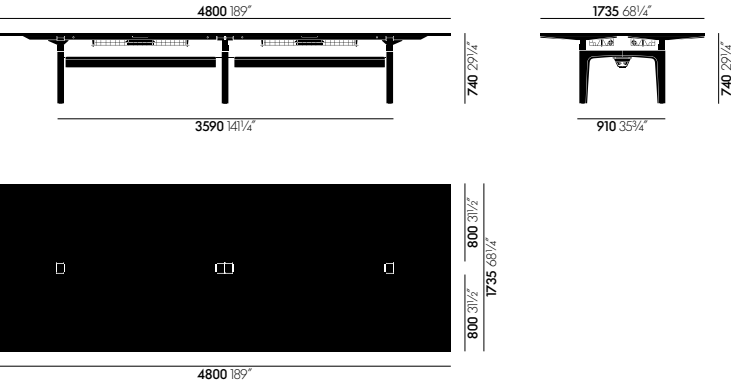


CDS Bench 360, incremental height adjustment, 4 table tops

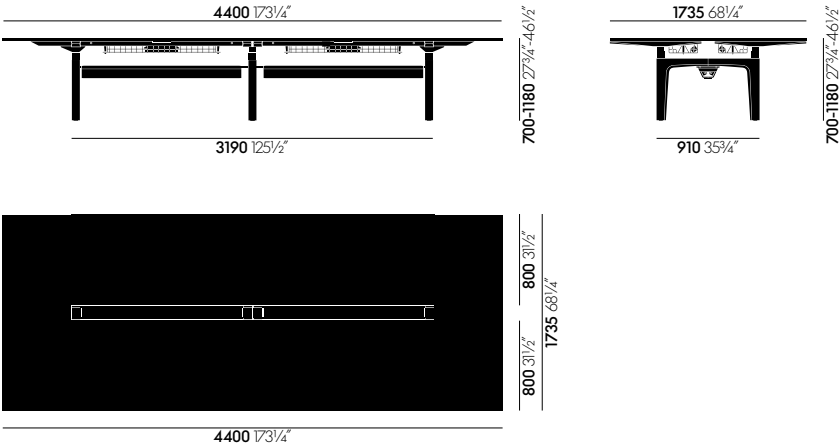




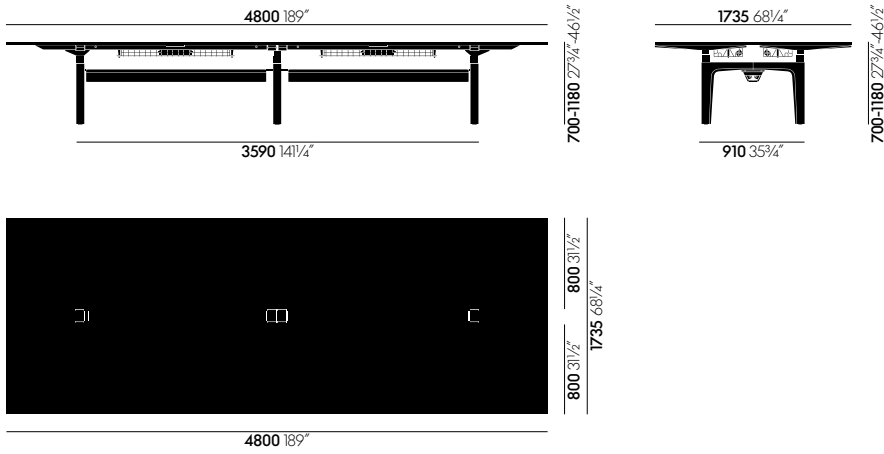
CDS Platform 440, with 4 table tops and 2 end table tops, fixed height



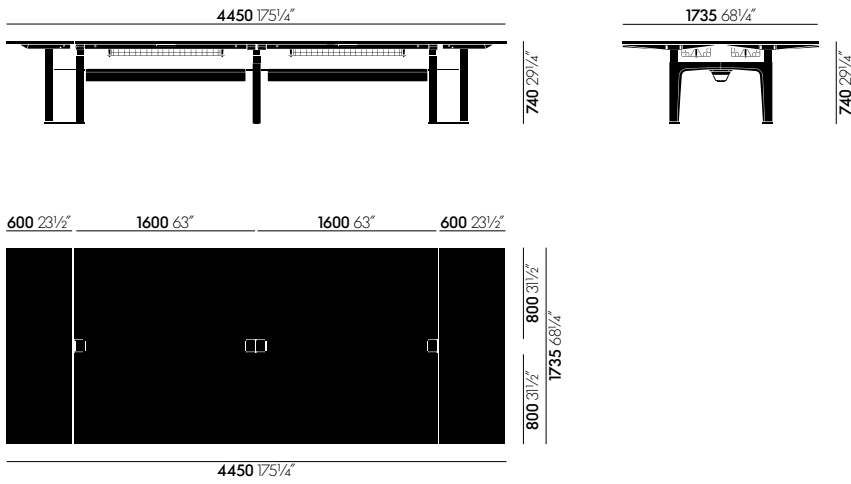
CDS Platform 480, with 4 table tops and 2 end table tops, fixed height



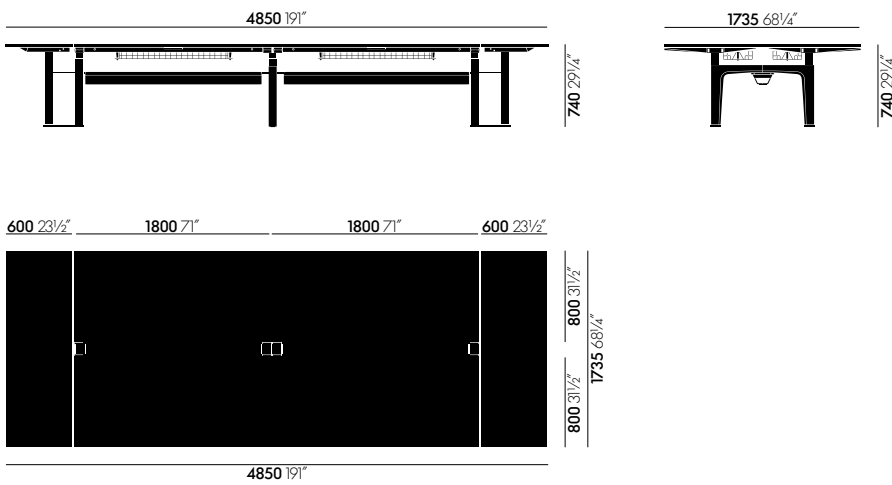
CDS Platform 440, incremental height adjustment, 4 table tops and 2 end table tops



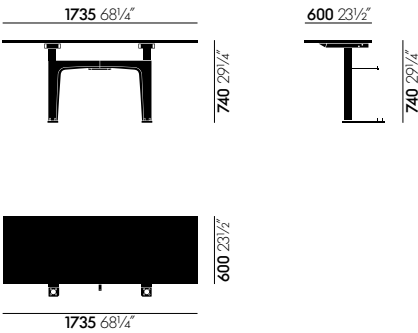
CDS Platform 48o, incremental height adjustment, 4 table tops and 2 end table tops



CDS Double platform 16o with independent end table tops



CDS Double platform 18o with independent end table tops



CDS Independent end table top

COLOURS AND MATERIALS



Roller blinds

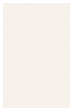


17
light oak



04
dark oak, with
protective
varnish

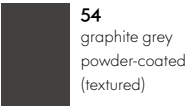
Table tops



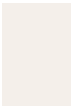
52
soft light



08
grey



Under-table unit



52
soft light



54
graphite grey

Additional elements



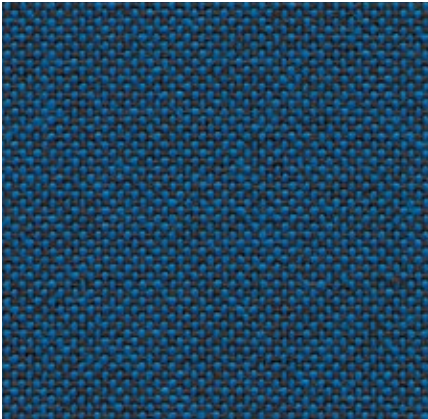
12
deep black
anodized



05
light silver
anodized

Technical rail



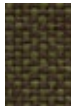


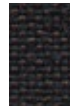

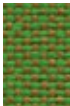



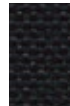



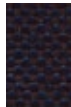



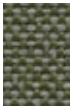

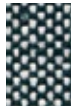

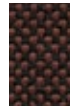
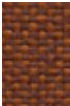


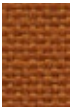


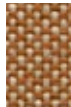


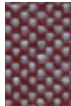



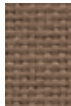
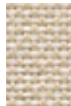
Plano Home/Office, F30



Plano is a robust plain weave with a flat, even texture. The wide palette of duotones with new, delicate washed-out shades includes many relatively neutral hues, a good number of which are coordinated with the Hopsak colour range. Thanks to its durability and longevity, Plano is also an ideal choice for office furnishings.

Plano is available in 39 colours.

Material	100% polyester
Weight	265 g/m ² (7.8 oz/y ²)
Width	142 cm +/- 2 cm (56")
Abrasion resistance	80,000 Martindale
Fastness to light	Type 6
Pilling	Grade 4-5
Fastness to rubbing	Grade 4-5 dry and wet

 05 cream white/ sierra grey	 34 grass green/ forest	 40 coconut/forest	 81 blue/coconut	 19 sierra grey	 73 nero/coconut
 18 light grey/sierra grey	 61 classic green/ cognac	 52 mint/forest	 13 nero/ice blue	 74 sierra grey/nero	 66 nero
 39 yellow/pastel green	 41 classic green/ forest	 43 petrol/nero	 86 dark blue/brown	 69 dark grey	 54 brown
 68 avocado	 17 forest/sierra grey	 12 light grey/ice blue	 87 nero/cream white	 62 dark grey/nero	 75 marron/nero
 11 marron/cognac	 72 poppy red	 84 poppy red/ champagne			
 67 cognac	 07 orange	 15 pink/sierra grey	 99 cognac/parch- ment		
 98 dark red/nero	 96 red/cognac	 16 dark red/ice blue	 20 tobacco/cream white		
 97 red/coconut	 63 red/poppy red	 80 coffee	 03 parchment/ cream white		

