

FLOS

03.6808.40ADA White

Light Supply Adjustable Trim Dimmable

Designed by Flos Architectural, 2017

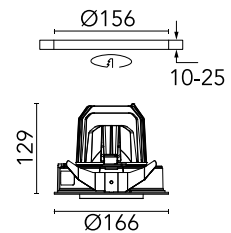
LED - LED array - 30.1W - 1508lm - 3000K - CRI> 90 - Beam° 39



Recessed luminaire with LED light source. Remote 220/240V power supply included.

Are you a professional and your project needs consulting and support?

[BOOK AN APPOINTMENT](#)



Main specifications

Mounting	Ceiling recessed
Environment	Indoor dry location
LED type	LED array
Lamp category	LED
Icos	No
Number of heads	1
Power (W)	30.1
Source flux (lm)	2902
System flux (lm)	1508

Physical

Colour	White
Trim	No
Orientation	Adjustable
Rotation (°)	355
Longitudinal tilting (°)	35
Recessed depth (mm)	239
Net weight (kg)	1.01
IP	20
IP external	23

Download

Mounting instructions [↓ PDF](#)

Photometric Files

LDT / IES [↓ ZIP](#)

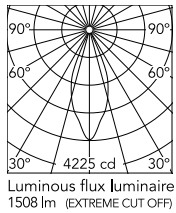
Technical Drawings

2D [↓ ZIP](#)

3D [↓ ZIP](#)



Schematic light drawing



Beam Angle: 39°

h(m)	E(lx)	D(m)
1	4225	0.71
2	1056	1.42
3	469	2.14
4	264	2.85
5	169	3.56

Photometric

Lighting type	Direct
Light distribution	Symmetric
CCT (K)	3000
CRI>	90
Beam angle C0-180 (°)	39
Beam angle C90-270 (°)	39

Electrical

Insulation class	II
Frequency (Hz)	50/60
Main voltage (Vac)	37.60
Driver	Remote included
Dimmable	Yes
Dimming type	Dimmable 1-10V, Dimmable DALI 1
Emergency type	No

Accessories & Power Supply



OPTIONAL
Accessory

08.8049.14

Honeycomb. Small Cells



OPTIONAL
Accessory

08.8118.68

Elliptical lens



OPTIONAL
Accessory

08.8242.14

Screening crosspiece



OPTIONAL
Accessory

08.8377.14

Honeycomb. Big Cells



OPTIONAL
Accessory

08.8450.00

Light Supply Adjustable spare
reflector. Spot



OPTIONAL
Accessory

08.8451.00

Light Supply Adjustable spare
reflector. Medium



OPTIONAL
Accessory

08.8452.00

Light Supply Adjustable spare
reflector. Flood



OPTIONAL
Accessory

08.8453.40

Highly-efficient cylinder