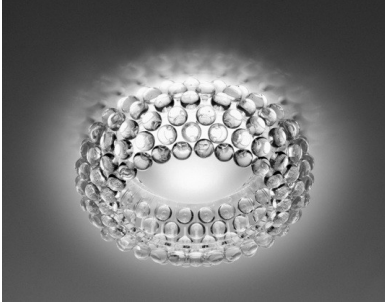
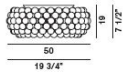


CABOCHE SOFFITTO

DESIGN PATRICIA URQUIOLA + ELIANA GEROTTO/2006



Ceiling lamp composed by spheres made of polymethylmetacrylate, transparent or gold yellow. Shade in blown glass, white matt finish.

CABOCHE SOFFITTO

Trasparente



Giallo oro

Certifications**BULBS**

halogen
1x120W R7s energy saver

**BULBS (120 V)**

halogen
1x100W RSC (4 11/16") type T3

