

01

MATTHEW HILTON  
387 ARMSTRONG COFFEE TABLE

DE LA ESPADA

MATTHEW HILTON

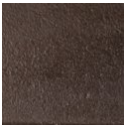


387 ARMSTRONG COFFEE  
TABLE

Armstrong Coffee Table is a cool and brooding design in solid hardwood with cast iron legs. Designed by Matthew Hilton for his eponymous brand, and manufactured by De La Espada craftsmen.



MATERIAL OPTIONS



SPECIFICATION

Available in American black walnut finished with a Danish oil or American white oak finished with a Danish oil or white oil, with cast iron legs

SIZE

w.94cm x d.94cm x h.24cm  
w.37 1/8" x d.37 1/8" x h.9 3/7"

02

MATT  
HILTON  
DESIGNS

DE  
LA  
ESPADA